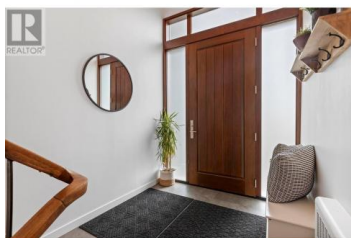


990 Fairway Crescent Kelowna British Columbia

Glenmore

\$1,325,000



Family home in Golfview Estates located on the 5th hole of the esteemed Kelowna Golf and Country Club steps outside your back door. Tasteful updates throughout, blending modern comfort with a serene setting. The living room is bathed in natural light through huge windows, complementing the cozy fireplace feature. The dining room opens up to the upper deck and outdoor dining area via glass patio doors, perfect for entertaining. In the kitchen, a large window spans the outer wall, providing breathtaking views of the adjacent golf course, while offering ample counter space and cabinetry. The main level includes the primary bedroom with an ensuite, two additional bedrooms, and a full bath. Downstairs, the spacious recreation room is ideal for family activities, alongside the home's third and fourth bedrooms, both with access to the beautifully landscaped backyard. The outdoor area boasts a concrete patio surrounding an in-ground pool with a diving board, plus plenty of green space for relaxation. With excellent curb appeal, mature landscaping, and a concrete driveway offering additional parking, this home sits at the base of Dilworth Mountain in a quiet, family-friendly neighborhood. It's conveniently located just a 10-minute drive from Orchard Park Mall and local dining. (id:6769)

Jesse East

RE/MAX Kelowna

Phone: (250) 862-1234

<http://www.jesseeast.com/>



RE/MAX Kelowna
 100-1553 Harvey Avenue
 Kelowna, BC,
 Canada

