



Edmonton Alberta

Strathcona

\$380,000



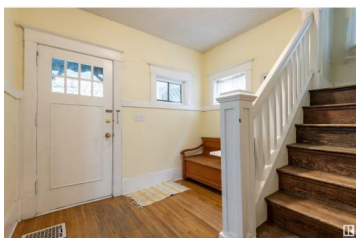
Welcome to this charming, character-filled home built in 1913, added to the City's Inventory of HISTORIC RESOURCES , Heritage resources that merit conservation. Located in the heart of STRATHCONA, walking distance to WHYTE AVENUE, minutes away from DOWNTOWN and the UOFA, this charming property offers 1700 SqFt of living space , Open living and dining area and boasts three spacious bedrooms, a four piece bathrooms, and a versatile third-floor loft. If you're someone that wants to own a piece of history , don't miss this great property eligible for grants for Heritage rehabilitation work . (RF2 zoning) (id:6769)

Victoria Rempel

RE/MAX Elite

Phone: (780) 266-0071

<https://www.victoriarempel.ca/>



RE/MAX Kelowna
100-1553 Harvey Avenue
Kelowna, BC,
Canada