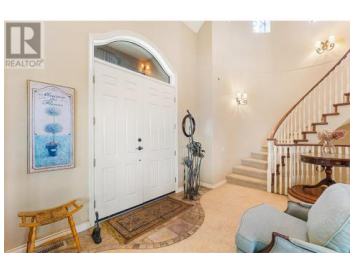


998 Skeena Drive Kelowna British Columbia

Dilworth Mountain

\$1,898,000



Perched at the very top of Skeena Drive, this over 4,300 SQFT custom-built residence offers an incredible vantage point with sweeping views of the valley, lake, and city lights. Thoughtfully designed to embrace its surroundings, the home features expansive windows and 2 covered decks, perfect for enjoying both sunrises and sunsets. Inside, the home offers 4 beds and 5 baths, with meticulous craftsmanship evident in every detail. Custom built-ins and premium finishes throughout. The gourmet kitchen is ideal for gathering and entertaining, equipped with KitchenAid appliances, an expansive island, granite countertops, and a built-in wine rack. A butler's pantry enhances both storage and functionality, while the built-in media wall with a gas fireplace in the living area creates a warm and inviting ambiance. The primary suite occupies its own private level, a true retreat featuring a massive walk-in closet, a spa-like ensuite with heated tile floors, a soaker tub, and an oversized shower. A bay window alcove provides the perfect place to unwind. Temp controlled, 3,000+ bottle wine room, a lower-level kitchenette for added flexibility, built-in surround sound, and a security system are a few highlights of this home. Set on a rare 0.28 acre lot in the heart of the city, this property provides the luxury of space and privacy with the convenience of urban amenities close by. A l...



RE/MAX Kelowna
100-1553 Harvey Avenue
Kelowna, BC,
Canada

Dean Simonelli

Unison Jane Hoffman Realty

Phone: (250) 863-6300

<http://www.janehoffman.com/>

