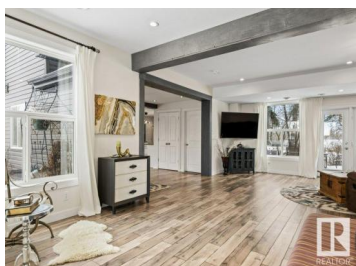
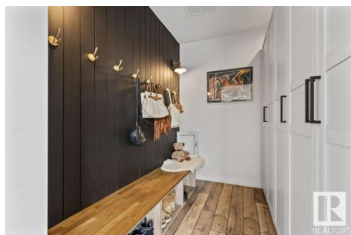
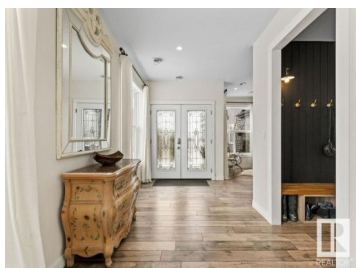
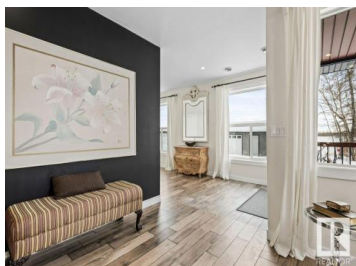




Rural Leduc County Alberta

None

\$1,799,000



Rare Opportunity to own this STUNNING COUNTRY ESTATE on 68 ACRES, offering luxury and tranquility while staying connected to New Sarepta, Leduc, Beaumont & Edmonton. This 4,857 sq. ft. property features 6 BEDROOMS, 4 BATHS, a gorgeous Kitchen, Den, Family Room and a bright, spacious living room with massive windows and natural light. The luxurious Primary Suite boasts a spa-like ensuite and walk-in closet. Upstairs laundry adds convenience, while the triple oversized heated garage and detached garage provide ample storage. Outdoors, enjoy a meticulously landscaped yard and TWO 40x100 BARNS, previously used for an EQUESTRIAN OPERATION—ideal for horse enthusiasts or new ventures. Whether you're seeking a private retreat, hobby farm, or equestrian estate, this property offers endless possibilities! (id:6769)

Victoria Rempel

RE/MAX Elite

Phone: (780) 266-0071

<https://www.victoriarempel.ca/>



RE/MAX Kelowna
100-1553 Harvey Avenue
Kelowna, BC,
Canada