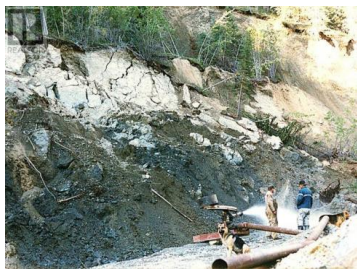
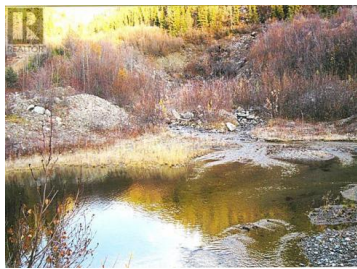


Yukon Wide Yukon

\$5,799,999



Welcome to the Martin Creek Mine - 57 Gold mining claims that are ready for you to start mining for this precious mineral. Opportunities like this are few and far between, and for the right investor, these gold claims will provide years of return. The property is conveniently located a short flight from the city of Whitehorse and has A 120-kilometre winter road from Whitehorse to Martin Creek which provides hauling access for fuel, supplies and heavy equipment needs. These claims are ready to go and it will not take much to get started. Land improvements include a 1-kilometer air strip, a 10-person camp, a tool shed, a wood working shed, a settling pond, and access roads along the Martin Creek mining area. The Yukon Water Board has granted a water license to Martin Creek Mining Company for placer gold mining activities. The water license is active and remains in good standing. Call your Realtor NOW for more information. view website @ www.martincreekmining.com (id:6769)



RE/MAX Kelowna
100-1553 Harvey Avenue
Kelowna, BC,
Canada

Bob Kostelnik

2% Realty Midnight Sun

Phone: (867) 333-9242

