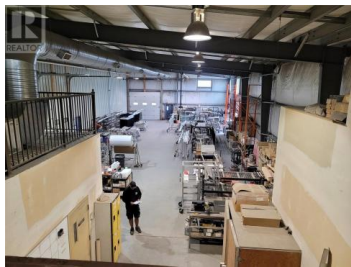
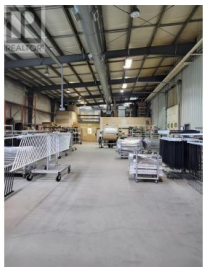




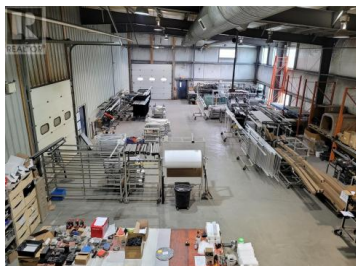
747 Fitzpatrick Road B Kelowna British Columbia

Rutland North

\$17



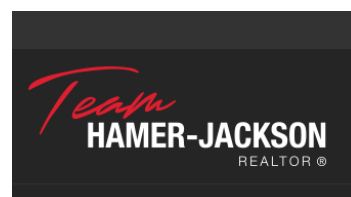
This is a short term sublease to December 30, 2025. Longer term may be available with a new head lease. Great location. Currently used for metal fabrication and manufacturing. Can be vacated and made available within 48 hours. (id:6769)



Murray Wills

Venture Realty Corp.

Phone: (250) 808-6877



RE/MAX Kelowna
100-1553 Harvey Avenue
Kelowna, BC,
Canada