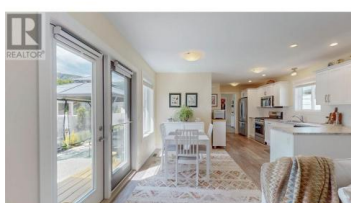




4505 MCLEAN CREEK Road G22 Okanagan Falls British Columbia

Okanagan Falls

\$410,000



This modern home in Phase II of Peach Cliff Estates offers a bright and comfortable living experience. The spacious open-concept layout is filled with natural light from large windows throughout. A sleek white kitchen features modern cabinetry, stainless steel appliances—including a gas stove—contemporary fixtures, and plenty of prep space, making it ideal for both cooking and entertaining. Durable vinyl plank flooring runs throughout the home, combining style with practicality. Comfort is ensured year-round with central air, an energy-efficient gas hot water tank and furnace, and a heated crawl space for extra storage. Outside, the landscaped lot includes a new irrigation system and is enclosed by fresh white vinyl fencing, offering privacy and a pleasant space to relax or garden. An attached garage provides secure parking and additional storage. Located in a quiet, scenic setting just 15 minutes south of Penticton and north of Oliver, Peach Cliff Estates Phase II is a well-maintained 55+ community. Pets are welcome with approval. Rentals are not permitted, preserving a peaceful and friendly environment—ideal for a low-maintenance retirement or part-time residence. (id:6769)

Maria McCarthy

RE/MAX Wine Capital Realty

Phone: (250) 498-6500



RE/MAX Kelowna
100-1553 Harvey Avenue
Kelowna, BC,
Canada

