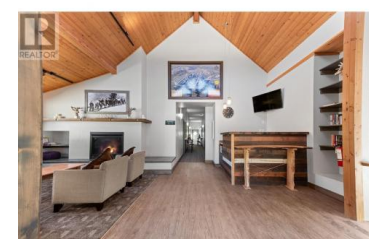
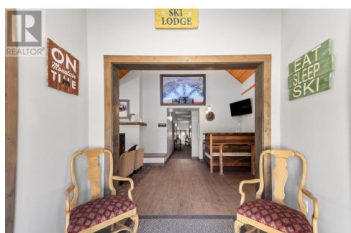


360 STRAYHORSE Road L-13 Apex Mountain British Columbia

Penticton Apex

\$859,000

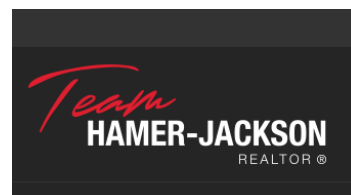


Welcome to Apex Mountain Ski Resort's premier guest lodge, recently updated and brimming with potential for your seasonal or year-round business. This exceptional offering includes the second and third floors, comprised of 10 hotel-style guest suites, a caretaker suite, convenient ski lockers, as well as a large group kitchen and Games & Social room on the main floor. Complete with all furnishings, this is a package presenting incredible value. This property offers flexibility to maintain it as a hotel or group lodge, or convert it into multiple full apartments. Located in the heart of Apex Village, the lodge provides ski-in/ski-out access, with restaurants and shops just steps away, and parking for up to twelve vehicles, including two EV outlets. All measurements are approximate. For more details or to schedule a private viewing, please contact the listing REALTOR®; or your agent. Contingent upon subdivision. (id:6769)

Lyndi Ainsworth

Engel & Volkers South Okanagan

Phone: (250) 809-1260



RE/MAX Kelowna
100-1553 Harvey Avenue
Kelowna, BC,
Canada