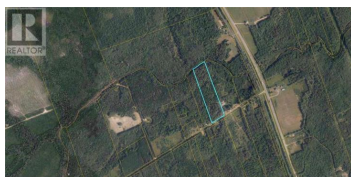
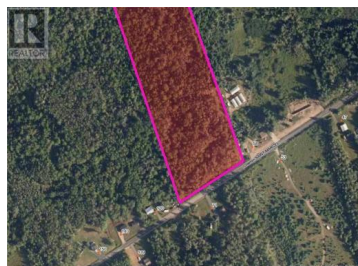




**Acadie Siding New Brunswick**

**\$29,900**

New Brunswick Real Estate Board



Your Acadieville Dream Awaits! 5.26 Hectares of LAND in Kent County!  
Discover a vast approximately 13 acre lot at Lot 1 Chemin Saint-Marcel, Acadieville, E4Y 1R4. Located in Kent County's peaceful Adamsville district, this expansive parcel offers endless possibilities. Imagine building your private estate, starting a hobby farm, or exploring development opportunities (subject to approvals). This significant piece of New Brunswick land provides ample space, privacy, and connection with nature, all within a tranquil setting yet conveniently accessible. 50 minute drive to Magnetic Hill, don't miss this rare chance to secure your future in Acadieville. Contact us today! (id:6769)



**RE/MAX Kelowna**  
100-1553 Harvey Avenue  
Kelowna, BC,  
Canada

**Jeremy Lyons**

RE/MAX Quality Real Estate Inc.

Phone: (506) 962-6222

