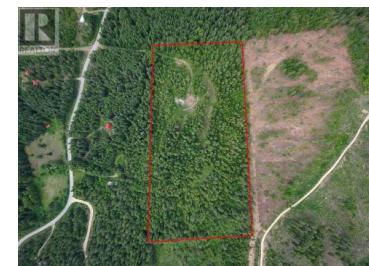




## Lot 22 LAKEVIEW ARROWCREEK Road Wynndel British Columbia

Wynndel/Lakeview

**\$399,000**



Privacy, Wilderness, and Convenience Combined! This stunning property borders Crown Land, offering exceptional privacy, direct access to nature, and a true wilderness experience right from your doorstep. There are multiple prime building sites to choose from- whether you're planning a dream home, shared family sanctuary, or future development, the gently sloping topography and expansive layout allow for a variety of build options. Each potential site benefits from natural privacy, giving you the freedom to design your ideal setup—whether it's capturing mountain views, maximizing sunlight, or ensuring separation between dwellings. With space to spread out and options to suit your vision, this land is ready to bring your plans to life. A BRAND NEW WELL has just been drilled, delivering an impressive 15 gallons per minute, ensuring a reliable water source for years to come. Located on a quiet no-through road, this property offers the peace and seclusion of rural living without sacrificing convenience—Creston's shops, restaurants, and services are only a short drive away. Enjoy the best of both worlds: unmatched natural surroundings with all the amenities of town close at hand. This is a must-see for anyone seeking space, privacy, and the freedom to create something truly special. (id:6769)

**Sheena Sobkiw**

Century 21 Assurance Realty

Phone: (250) 254-4580

<http://sheena-sobkiw@c21.ca/>



**RE/MAX Kelowna**  
100-1553 Harvey Avenue  
Kelowna, BC,  
Canada

