

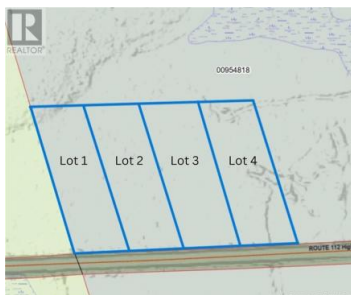


Second North River New Brunswick

\$44,900

ROUTE 112 High

New Brunswick Real Estate Board

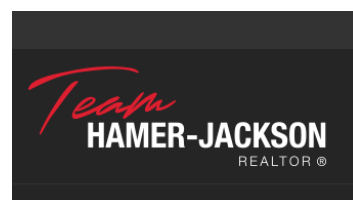


2 acre treed lot in a fantastic location only 5 minutes to the Trans-Canada Highway and 10 minutes to Salisbury. Can be sold with adjacent lots 1, 2 and 3. HST will be applied on closing with a new PID assigned. Lot will be surveyed before closing at seller's expense. (id:6769)

Craig Eccles

RE/MAX Quality Real Estate Inc.

Phone: (506) 688-3400



RE/MAX Kelowna
100-1553 Harvey Avenue
Kelowna, BC,
Canada