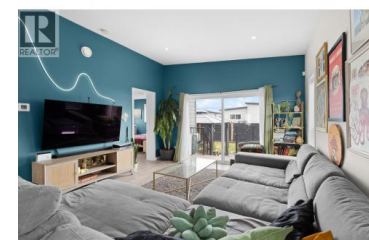




## 8900 Jim Bailey Road Lot 74 Kelowna British Columbia

Lake Country East / Oyama

# \$465,000



Assessed at \$573,000. GST is paid & exempt from PTT! Looking for a newer, affordable home that's not a townhouse or a condo, where you can have your own yard, parking and are not distracted by neighbours above you or beside you attached by a wall? Maybe you are an investor looking for an affordable place that allows short-term rentals and pets? Look no further because the friendly Deer Meadows neighbourhood is conveniently located just steps away from the Rail Trail where you are connected to Wood Lake and the blue waters of Kalamalka Lake with trail access spanning from Vernon to Kelowna, making groceries, resturants and schools accessible. Above and beyond, this pet-friendly community has a park and 2 pickleball courts on site. The Skylark double wide 3-bed 2-bath features a welcoming entryway, a seamless layout with modern finishes throughout the home, a functional floorplan offering separation between bedrooms, a must-have pantry, space for a family and dining room, a large primary with an ensuite/walk-in shower and a walk-in closet, a separate bathroom with a tub, laundry room and lots of space to grow into. Upgrades include:

- o Reinforced concrete garage floor
- o Brown pressure-treated wood deck
- o Metal finished roof
- o Beautifully finished landscaping in the backyard and gazebo - making this home move-in ready for the summer months ahead. Book your showing today! (id:6769)



**RE/MAX Kelowna**  
 100-1553 Harvey Avenue  
 Kelowna, BC,  
 Canada

**Shenaya Sweetman**

Coldwell Banker Executives Realty

Phone: (778) 246-3960

<http://www.sweetmanhomes.com/>

