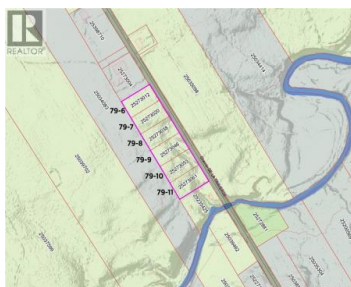


New Brunswick Real Estate Board

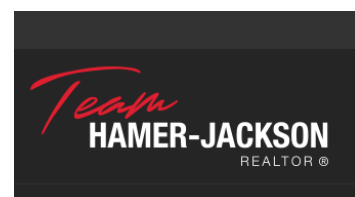


This is one of 6 country lots all for sale on De La Traverse Road in Saint Paul! Fully treed with a small stream running through the land! This lot is 5342 square meters or approximately 1.32 acres, with 54.86 metres of frontage. PID 25273038. The six lots can be sold together or separately - you could have a whole family compound! A gorgeous view of a farm field directly across the street. Walking distance to Saint Pauls Centennial Park, with a children playground, the Rabbit Walking Trail, and the Buctouche River running through it. Walking distance to Hilltop Variety Store for groceries, gas and food, and minutes from the Saint Paul Fire Department and Saint Paul Catholic Church. Saint Paul also has a community centre, a Golden Age Club, a Canada Post, and a skate park. These lots are fresh and unaltered and just waiting for your vision! Electrical at the lot line for easy access. Lots are Residential and it should be easy to get building permits. Buyers to call Kent Regional Service Commission to perform due diligence before purchase. (id:6769)

Tina Lynch

RE/MAX Quality Real Estate Inc.

Phone: (506) 899-3885



RE/MAX Kelowna
100-1553 Harvey Avenue
Kelowna, BC,
Canada