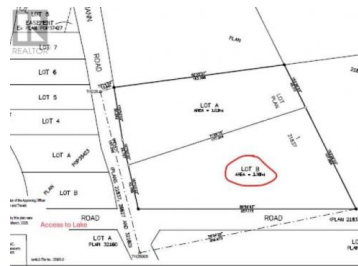
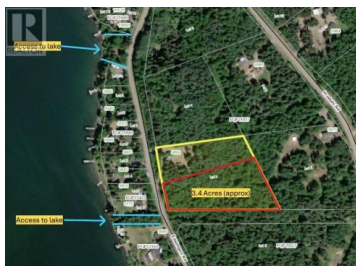




9860 EDELMANN Road LOT B Prince George British Columbia
\$140,000



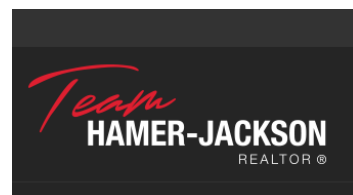
* PREC - Personal Real Estate Corporation. LOT B - Fully treed 3.41 acres (approx) sub lake shore on Ness Lake. Sellers recently subdivided. This is a great location for your dream home with lake access across the road. (id:6769)

Dean Birks

Royal LePage Aspire Realty

Phone: (250) 612-1709

<http://deanbirks.com/>



RE/MAX Kelowna
 100-1553 Harvey Avenue
 Kelowna, BC,
 Canada