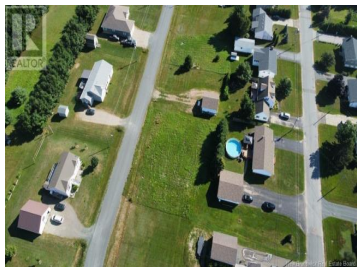




## Acadieville New Brunswick

# \$42,000

New Brunswick Real Estate Board



This double lot in Rogersville, NB, offers a fantastic opportunity for building your dream home or a new project. APPROX .38 acres +/-With all amenities within walking distance, you'll enjoy convenience and accessibility. Municipal sewer and water connections are readily available at the street, making it easier to start construction. Plus, you're just 20 minutes from Kouchibouguac National Park, 35 minutes to Miramichi, and about an hour to Moncton. This prime location combines small-town charm with proximity to natural beauty and larger city amenities!( PID COULD CHANGE< PROPERTY WILL BE SUBDIVIDED BEFORE CLOSING) (id:6769)



**RE/MAX Kelowna**  
100-1553 Harvey Avenue  
Kelowna, BC,  
Canada

**Debbie Arsenault**

RE/MAX Quality Real Estate Inc.

Phone: (506) 866-9410

