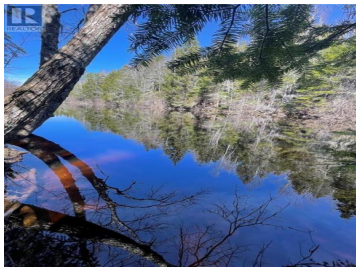
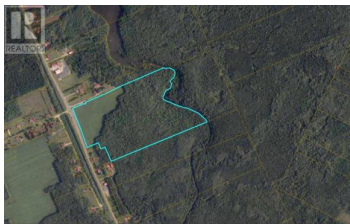
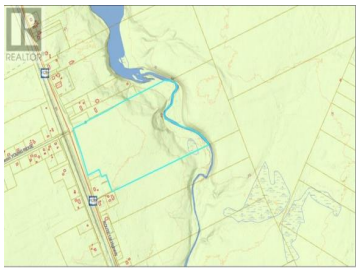




**Rogersville New Brunswick**

**\$165,000**

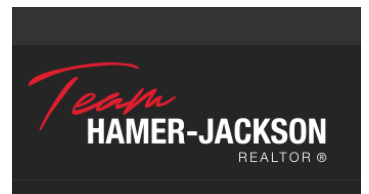


GREAT OPPORTUNITY!! Are you looking for a great project with 68 ACRES +/- of land located in Rogersville NB, Minutes to all amenities. This Parcel contains , level farming land in the front, great spot for agricultural opportunity, possibly business for apple orchards. The back parcel has lots of trees, great spot to develop the land to possibly subdivide. FRONTAGE 890 FT APPROX. The back of the property connect to the Barnaby river, APPROX 1900 FT deep to the road frontage. Don't miss out on this beautiful parcel! (id:6769)

**Debbie Arsenault**

RE/MAX Quality Real Estate Inc.

Phone: (506) 866-9410



RE/MAX Kelowna  
100-1553 Harvey Avenue  
Kelowna, BC,  
Canada