

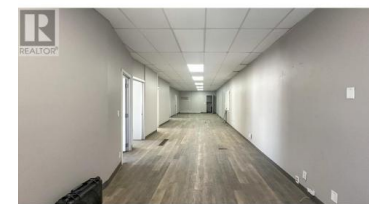
1505 Hardy Street Portion of Kelowna British Columbia

Kelowna North

\$19



Outstanding opportunity to lease warehouse space in Central Kelowna just off the Harvey Ave/Highway 97 corridor. Totals 4,800 SF of industrial space including warehouse, and office space. 4 individual offices, a large open work area and washrooms. Warehouse space to the back of the unit with 4 dock height loading bays that are street facing. Potential for yard space to the rear at an additional cost. This is a well-established commercial area with neighbouring office, service commercial and light industrial uses. POTENTIAL TO ALSO LEASE UP TO APPROX. 1.65 ACRES OF YARD SPACE. (id:6769)

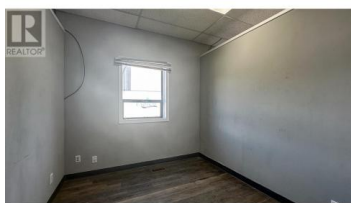


Kris McLaughlin

RE/MAX Kelowna

Phone: (250) 870-2165

<https://www.commercialbc.com/>



RE/MAX Kelowna
100-1553 Harvey Avenue
Kelowna, BC,
Canada