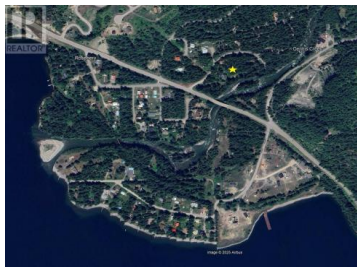




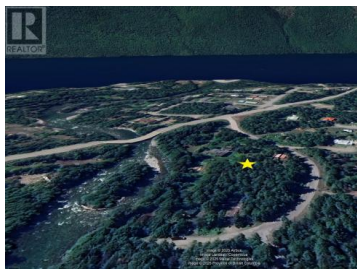
Rosebery Park Road Rosebery British Columbia

New Denver Area

\$95,000



Three 25'x115' lots are a great recreational opportunity and are within earshot of Wilson Creek in Rosebery. Approximately 7 minutes north of New Denver and 30-35 minutes south from Nakusp. Rosebery is a small community on Slokan Lake and boasts a great waterfront community park, fantastic Valhalla Mountain Range views, provincial park with campground, and loads of hiking trails including the historic Galena and Nakusp-Slokan Rail trails. An unbeatable location for outdoor enthusiasts with multiple accesses nearby to Slokan Lake, Arrow Lake, Kokanee Glacier Provincial Park, and multiple hot springs near Nakusp. (id:6769)

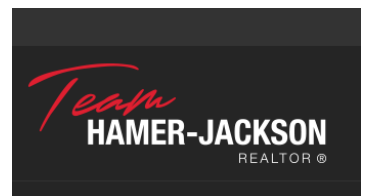


David Gentles

RE/MAX Four Seasons (Nelson)

Phone: (250) 354-8225

<http://www.nelsonrealty.ca/>



RE/MAX Kelowna
100-1553 Harvey Avenue
Kelowna, BC,
Canada