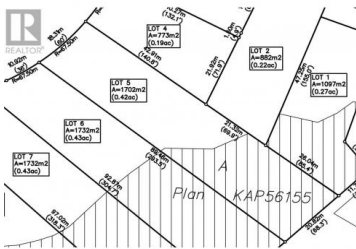


## Scenic Ridge Drive West Kelowna British Columbia

Smith Creek

**\$449,900**

SMITH CREEK  
WEST



It's 2020 at Smith Creek West!! For a very limited time, we have rolled back the pricing on our Phase 2 homesites by up to 25%, so don't miss your chance to take advantage of this exciting offer! After many months of design and detail work with our Guidelines consultant, and the City, we are excited to bring you the finest, most diverse and well integrated family homesites in West Kelowna. This exciting new family neighborhood is sure to delight with its spectacular lake, mountain, and rural vistas, easy access and proximity to all the ever expanding amenities of West Kelowna. Designed to integrate well with the native environment, and respect the history of the area, a quiet walk, hiking, mountain biking, and more are all available at your back door. We are confident that you'll find something that satisfies your home design preferences, space requirement and budget with the same stunning natural surroundings, neighbourhood focus, easy access, and proximity to the amenities that lead to a very quick "sellout" of the previous phase. This is a walk-out homesite which will accommodate rancher or two story design with walkout basement, pool sized backyard, with easy and level access and great LAKEVIEW potential. Two year time limit to build, and you can bring your own builder! Subdivision registration anticipated by the end of March 2024. (id:6769)



RE/MAX Kelowna  
100-1553 Harvey Avenue  
Kelowna, BC,  
Canada

**Brendan Stoneman**

RE/MAX Kelowna

Phone: (250) 864-0808

<http://www.brendanstoneman.com/>

