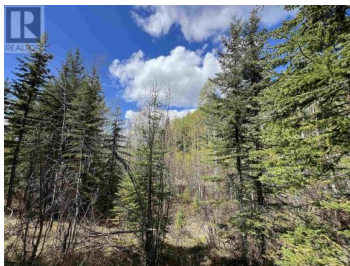


DL 2466 TCHESINKUT LAKE Burns Lake British Columbia

\$299,000

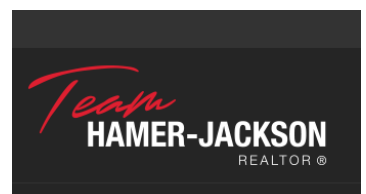


Larger than average property located adjacent to Highway 35 approximately 15 minute drive south of Burns Lake. This 118.49 acre land mass offers panoramic views of Tchesinkut Lake from a multitude of easily accessed building sites. Predominant aspect is southerly with the elevation gaining slow and steady as you travel over an existing network of established trails. 60 meters of elevation from the highway to the northwest corner. A small wetland traverses the approximate middle of the property. Mixed boreal forest with healthy young conifers and some merchantable timber. Not considered farm type land but there are decent areas for pasture development. Don't leave out the potential to subdivide. Get-a-ways like this are going to be in demand. Picture yourself investing in this today. (id:6769)

Cara McLeod

Royal LePage Aspire Realty

Phone: (250) 614-3992



RE/MAX Kelowna
100-1553 Harvey Avenue
Kelowna, BC,
Canada