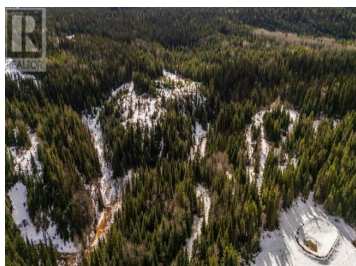




SPLENDOR Road Prince George British Columbia
\$125,000

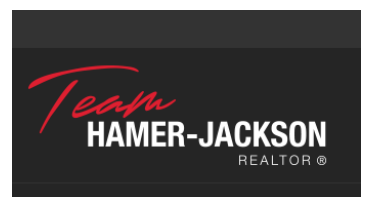


Priced below assessed value for a savvy investor with a vision to develop or an individual seeking to build a dream home amidst nature? Garvin Creek runs through this 14.44 acre raw land parcel that offers endless possibilities in a continually growing area featuring 5 acre rural lots. Turn your dreams into reality in this secluded yet accessible location. (id:6769)

Ron Gallo

Royal LePage Aspire Realty

Phone: (250) 564-4488



RE/MAX Kelowna
 100-1553 Harvey Avenue
 Kelowna, BC,
 Canada