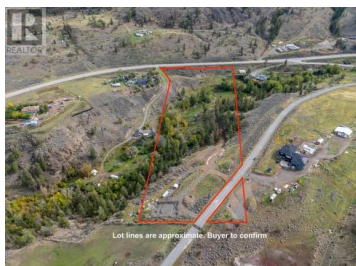




TRANS CANADA Highway Kamloops British Columbia

Cherry Creek/Savona

\$369,900



Escape to 9+ acres of tranquility just 9 minutes from Costco, with sweeping views of Kamloops Lake. Cherry Creek flows through the lower portion, creating a serene meadow setting. Zoned AF-1, this land is ideal for hobby farming, whether crops, livestock, or gardening. With two potential building sites, you have options to create your perfect retreat. With hydro at the lot line and convenient access from both the Trans-Canada Highway and Beaton Road, this property is perfectly positioned for your dream home. Enjoy hiking, wildlife viewing, and a peaceful, slower pace of life away from the city. (id:6769)

Nicola Gray

Engel & Volkers Kamloops (Sun Peaks)

Phone: (250) 804-7925



RE/MAX Kelowna
100-1553 Harvey Avenue
Kelowna, BC,
Canada