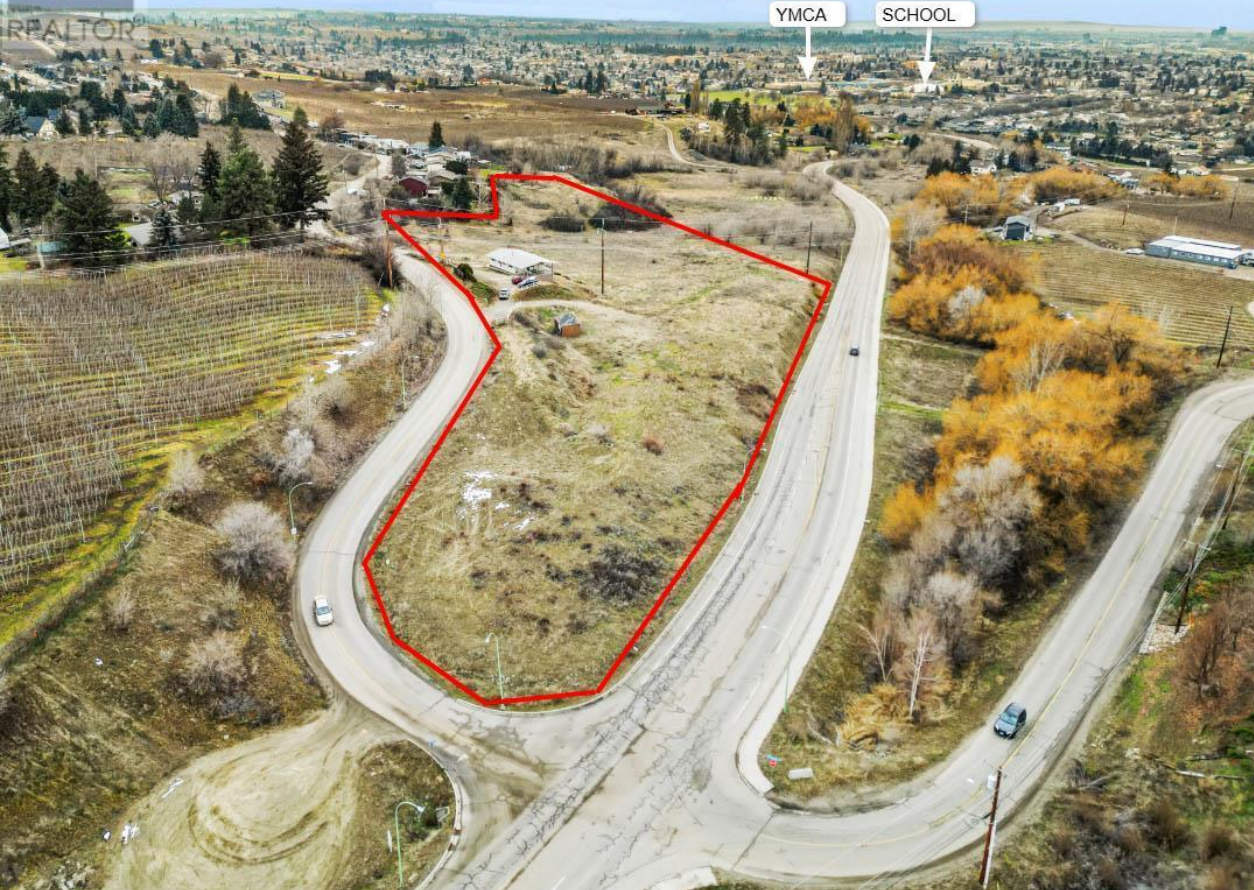




REALTOR



1460 Gibson Road Kelowna British Columbia

\$1,349,000

Nestled on 4.49 acres of agricultural land, this centrally located property offers endless possibilities. With scenic views overlooking the city and Okanagan Lake, it provides a peaceful yet convenient setting just minutes from the airport and UBCO. Ideal for equestrian use or as a hobby farm, this project home invites you to customize it to your vision. The property is connected to city sewer and may offer the opportunity to build a secondary home, making it a versatile investment. Whether you're dreaming of rural living or looking for a renovation project, this property has the potential to become something special. (id:6769)

- Storage 13'6" x 14'9"
- Storage 12'10" x 10'11"
- Storage 8'3" x 12'4"
- Storage 13'6" x 4'2"
- Storage 17'9" x 12'5"
- Laundry room 3'10" x 8'
- 3pc Bathroom 6'7" x 7'2"
- Recreation room 12'9" x 26'9"

- 5pc Bathroom 10'1" x 7'1"
- Bedroom 1'11" x 9'
- Primary Bedroom 11'5" x 13'
- Kitchen 13'6" x 11'9"
- Dining room 9'9" x 9'9"
- Living room 13'2" x 17'10"
- Foyer 10'5" x 6'8"

Listing Presented By:



Originally Listed by:
RE/MAX Kelowna

<http://www.geenbyrne.com/>

stilhavn
REAL ESTATE SERVICES

**Stilhavn Real Estate Services
Okanagan**

#100 - 3200 Richter Street,
Kelowna, BC,

Phone: (250) 878-3877
Shannon@MarkAndShannon.com

The property information on this website is derived from the Canadian Real Estate Association's Data Distribution Facility (DDF®). DDF® references real estate listings held by various brokerage firms and franchisees. The accuracy of information is not guaranteed and should be independently verified. The trademarks REALTOR®, REALTORS® and the REALTOR® logo are controlled by The Canadian Real Estate Association (CREA) and identify real estate professionals who are members of CREA. The trademarks MLS®, Multiple Listing Service® and the associated logos are owned by CREA and identify the quality of services provided by real estate professionals who are members of CREA.