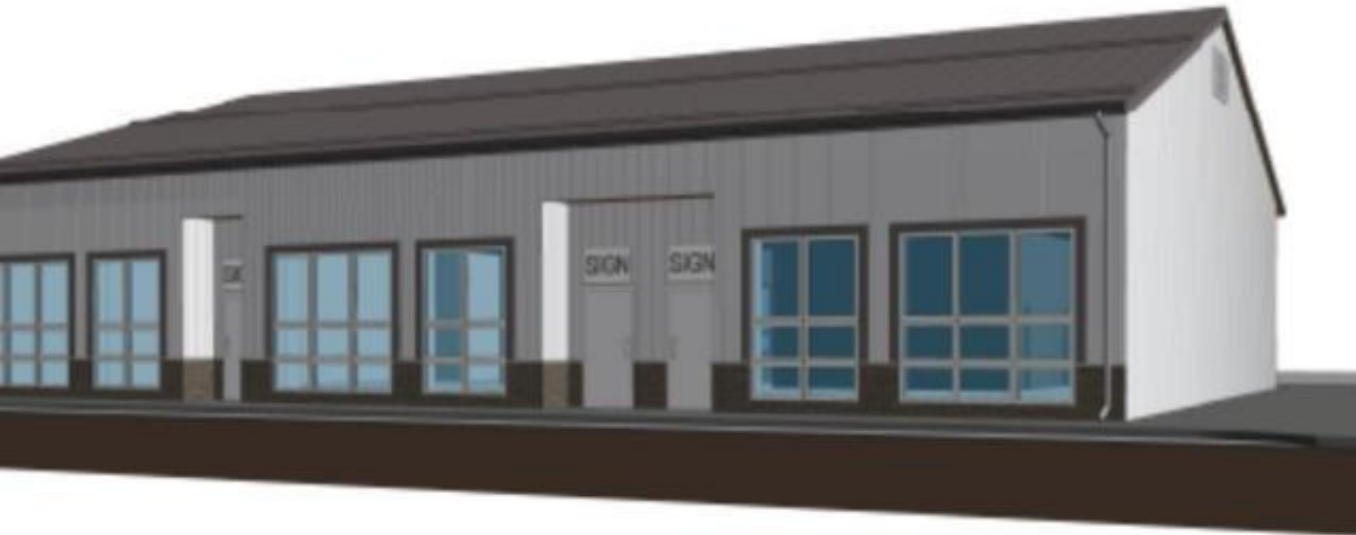




WHISTLEBEND SUBDIVISION, WHITEHORSE, YUKON



Whitehorse Yukon

\$2,200,000

Brand new 4564 sq ft commercial building in up and coming Whistle Bend neighbourhood. Building will soon be ready for fit up including polished concrete floors, metal roof, triple glazed windows, metal exterior with stone accents, can be separated into three units. Call for details (id:6769)

Listing Presented By:



Originally Listed by:

RE/MAX ACTION REALTY



Royal

LePage Kelowna

#1-1890 Cooper Road , Kelowna,
BC,

Phone: 250-860-1100

Fax:

sbuck56@gmail.com