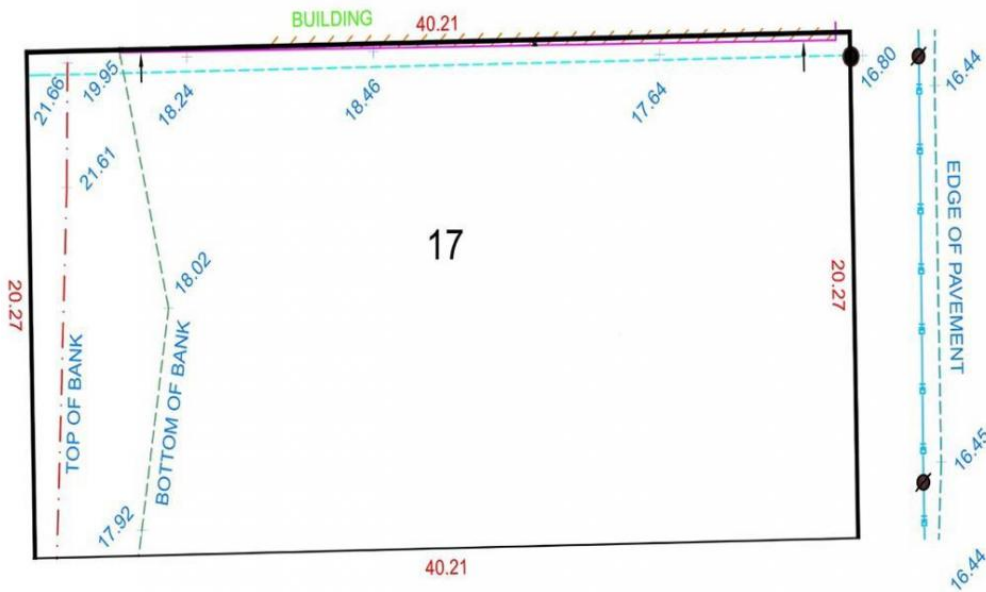
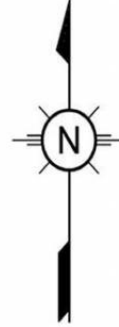


SITE PLAN OF:
LOTS 16 BLOCK 3, SECTION 1, NANAIMO DISTRICT, PLAN 584.

REALTOR®

LEGEND

- STANDARD IRON POST FOUND
- UTILITY POLE
- - - TOP OF BANK
- - - BOTTOM OF BANK
- STRUCTURE
- FENCE
- OVERHEAD WIRE



MLS®961965

212/218 Fry Street Nanaimo British Columbia

\$1,038,000

Unleash the Potential! Welcome to 212 and 218 Fry Street, extraordinary properties offering a rare investment opportunity! Whether you're looking to buy one or buy both, these gems are a must-see. Maybe you're an investor eyeing a singular purchase or a visionary looking to acquire both properties, this is a chance you won't want to miss. These properties boast the highly coveted COR3 zoning. This rare zoning opens the door to a myriad of possibilities, catering to the diverse needs of the surrounding community. The permitted uses are literally from A-Z, offering an unparalleled flexibility that's hard to find. Imagine the potential: a bustling hotel, apartment buildings or condos, a storage facility, or launch a convenient laundromat. For those with a community-focused vision, a neighborhood pub or a recreation facility could become the new local hotspot. Call me today!! All measurements are approximate (id:6769)

Listing Presented By:



Originally Listed by:
RE/MAX of Nanaimo

<http://www.thevipropertygirl.com/>



Royal

LePage Kelowna

#1-1890 Cooper Road , Kelowna,
BC,

Phone: 250-860-1100

Fax:

sbuck56@gmail.com

The property information on this website is derived from the Canadian Real Estate Association's Data Distribution Facility (DDF®). DDF® references real estate listings held by various brokerage firms and franchisees. The accuracy of information is not guaranteed and should be independently verified. The trademarks REALTOR®, REALTORS® and the REALTOR® logo are controlled by The Canadian Real Estate Association (CREA) and identify real estate professionals who are members of CREA. The trademarks MLS®, Multiple Listing Service® and the associated logos are owned by CREA and identify the quality of services provided by real estate professionals who are members of CREA.