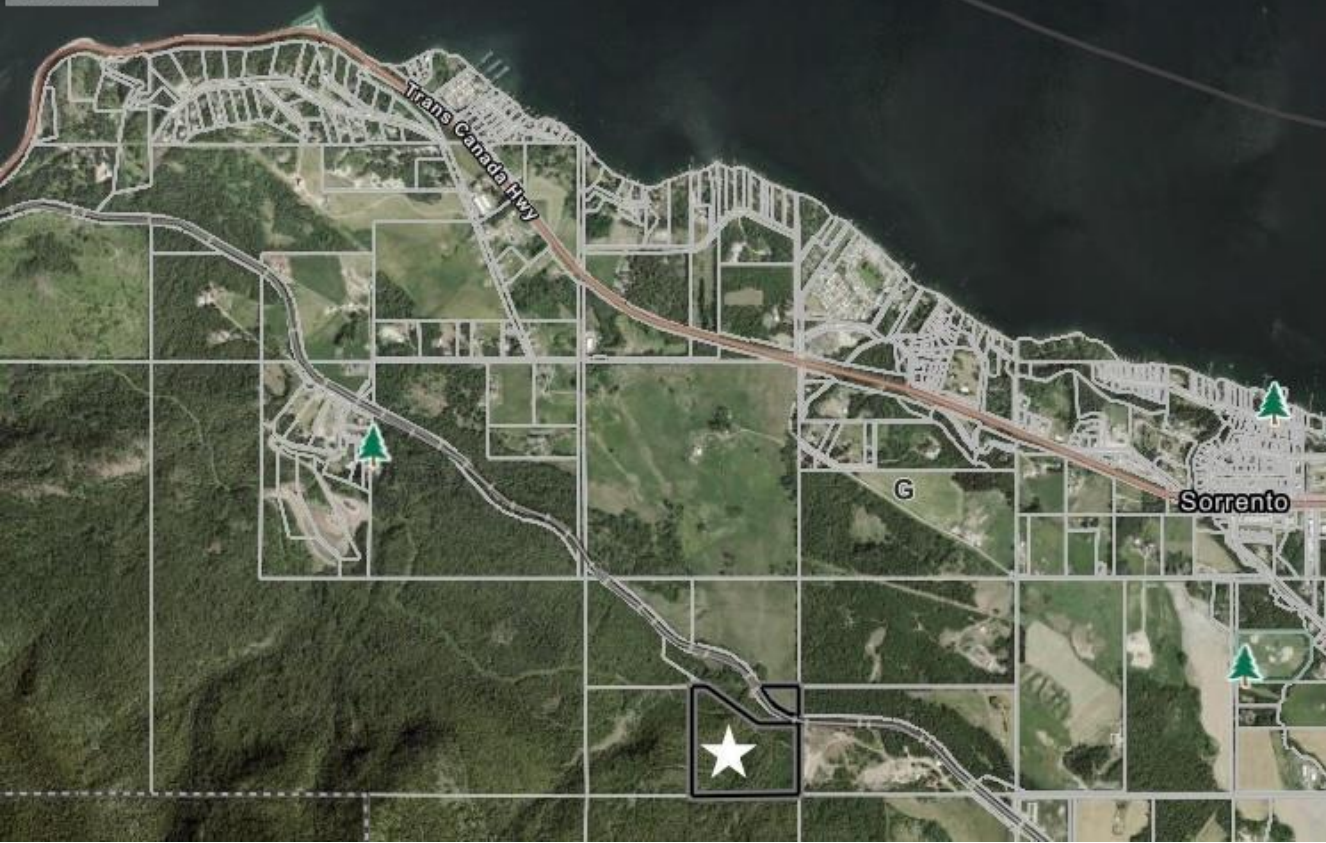




Shuswap Lake

F



# Dilworth Road Sorrento British Columbia

\$2,000,000

108.16 acres across three legal titles in the Sorrento area. Significant due diligence was conducted on this stunning lake-view site to progress towards a gravel pit operation. Nearby development in the area may allow for future development upside. One of the parcels contains a current water license. Canadian Pacific Railway bisects the property. A small component of one parcel is in the ALR. These properties are available independently or in conjunction with 890 Dilworth to the North / West, offering an additional 35.237 acres (SEE MLS 10392218). Combined listing MLS 10392448. The other parcel would be a fantastic site for a large estate-style home, a boutique farming operation, or long-term holding property. This is one of the largest-scale offerings currently available in the region. (id:6769)

Listing Presented By:



Originally Listed by:  
Sotheby's International Realty  
Canada

<https://hallcassiemarshall.com/>



Royal

**LePage Kelowna**

#1-1890 Cooper Road , Kelowna,  
BC,

Phone: 250-860-1100

Fax:

sbuck56@gmail.com

The property information on this website is derived from the Canadian Real Estate Association's Data Distribution Facility (DDF®). DDF® references real estate listings held by various brokerage firms and franchisees. The accuracy of information is not guaranteed and should be independently verified. The trademarks REALTOR®, REALTORS® and the REALTOR® logo are controlled by The Canadian Real Estate Association (CREA) and identify real estate professionals who are members of CREA. The trademarks MLS®, Multiple Listing Service® and the associated logos are owned by CREA and identify the quality of services provided by real estate professionals who are members of CREA.