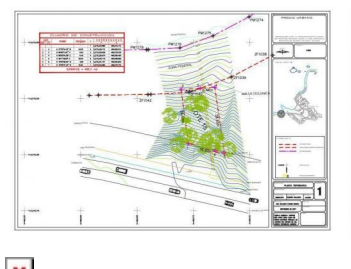
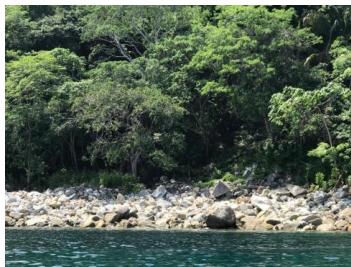




200 Mexico 200 Puerto Vallarta

South Shore

\$529,000



--400 sq meters atop and down a 105 foot cliff on a small bay in Mismaloya. The site sits near its mouth. --The mouth is a bit less than 300 meters from point to point and faces NW. Feels private. --Its NW point was the location for the 1964 film "Night of the Iguana". --The beach below is rocky with a large boulder that breaks the water. --Water is crystal clear. --Mountains rise immediately on east side of the two lane highway and gives late morning shade. --A 300 meter walk to a large fully sanded beach at the Playa Mismaloya with covered stalls of restaurants, massage, kayaking, and drinks. Perfect for building a beautiful, unique and private water home villa or if you are an investor or developer a nice boutique condo building.

Fabian O'Rourke

Lloyd Real Estate

Phone: (322) 150-7570

 PACÍFICO PROPERTY

Pacífico Property
Calle Miramar 25 C Sayulita, Nayarit.
63734
Sayulita, Nayarit, V1V2R1
Mexico


**PACÍFICO
PROPERTY**