

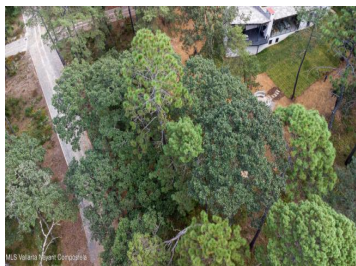


40-1 Predio Rustico La Lechuguilla Other

Other

\$91,892

ML S Vallarta Nayarit Compostela



Private Unit 40-1, part of Lot 40 within the rural property known as La Lechuguilla, is located inside Cardosanto Sustainable Life, one of the most privileged settings in the subdivision. Its elevated position offers truly breathtaking, unobstructed views that create a constant connection with nature and the surrounding landscape. Set in the municipality of Tapalpa, Jalisco, this countryside community blends tranquility, sustainability, and comfort. The project features an ecological concept with controlled access, a jogging track, commercial services, electricity and water infrastructure, and a serene water mirror, making it an ideal retreat for those seeking privacy, natural beauty, and a conscious lifestyle.

Ryan E Donner

Donner & Associates

Phone: (322) 111-1162



Pacífico Property
Calle Miramar 25 C Sayulita, Nayarit.
63734
Sayulita, Nayarit, V1V2R1
Mexico