

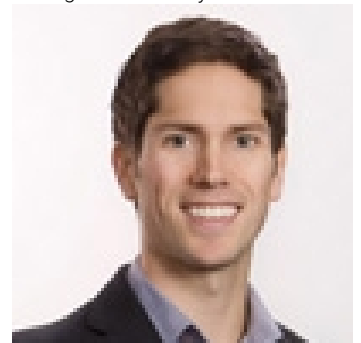


0 Thompson Avenue Nanaimo British Columbia

\$975,000

This approximately 56 acre vacant site is located in the South Wellington district of South Nanaimo. The split zoning of property AG1D (within the ALR) and RS2F (Rural residential) allows for agricultural use and rural development. The agricultural portion fronts on Beck Lake, has varying topography and contains a large peat deposit. The residential portion may have subdivision potential. The sale of this property is subject to an order of the Supreme Court of BC, any offer must include a Schedule "A" (Court approved sale) addendum, contact L/Agent for details and a copy of the schedule. (id:6769)

Listing Presented By:



Originally Listed by:
Royal LePage Duncan Realty

<http://brianhebbert.com/>



Royal

Lepage Parkside Realty

PO Box 930; 9925 Main St,
Summerland, BC,

Phone: (250) 462-4888
info@joepeters.ca

The property information on this website is derived from the Canadian Real Estate Association's Data Distribution Facility (DDF®). DDF® references real estate listings held by various brokerage firms and franchisees. The accuracy of information is not guaranteed and should be independently verified. The trademarks REALTOR®, REALTORS® and the REALTOR® logo are controlled by The Canadian Real Estate Association (CREA) and identify real estate professionals who are members of CREA. The trademarks MLS®, Multiple Listing Service® and the associated logos are owned by CREA and identify the quality of services provided by real estate professionals who are members of CREA.