

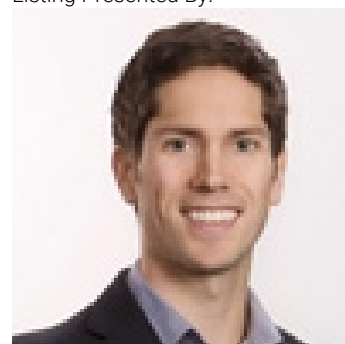


1415 Hunter Court 1 A/B Kelowna British Columbia

\$13

Opportunity to lease 2,400 SF of retail/office space centrally located at Hunter Court in Kelowna. This property offers a versatile layout that includes two sinks and a private washroom. 1415 Hunter Court is situated at the base of Dilworth Mountain in Kelowna, and is centrally located with easy access to all major routes. (id:6769)

Listing Presented By:



Originally Listed by:
Venture Realty Corp.



Royal

Lepage Parkside Realty

PO Box 930; 9925 Main St,
Summerland, BC,

Phone: (250) 462-4888
info@joepeters.ca