



253 Victoria Road 100 Nanaimo British Columbia

\$649,000

Welcome to The Seven, a beautiful 3 bedroom townhome with ocean views. This 3 level townhome has very unique features, including zoning for a commercial business, short-term rentals, and 3 pets are welcome! This end unit has over 1500sq ft, 3 bedrooms, 4 bathrooms and features modern design with lots of natural light, quartz countertops, and a balcony over looking the city landscape. The flex-space includes its own separate entrance to a large room for a business & has a 3 piece bathroom. It's the ideal space for the self-employed person looking to run a home-based business or rent the space for extra income. This location is walking distance to all amenities including the new Hullo Ferry, waterfront walk-way, Port Place Mall, the Port Theatre & plenty of restaurants & shops. You're also just minutes to the ferries & seaplane (id:6769)

Primary Bedroom 11'5 x 12'10

Bedroom 10'9 x 11'3

Ensuite 4-Piece

Ensuite 3-Piece

Bedroom 16'6 x 16'9

Entrance 6'5 x 5'1

Bathroom 2-Piece

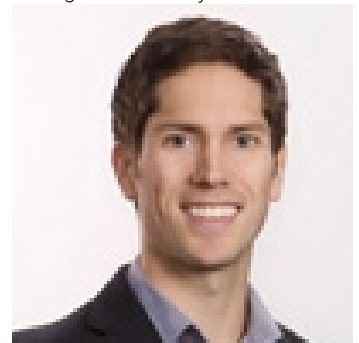
Living room 13'0 x 16'8

Kitchen 12'3 x 14'6

Dining room 7'7 x 12'6

Bathroom 2-Piece

Listing Presented By:



Originally Listed by:
Engel & Volkers Vancouver

<http://www.thesilveiragroup.com/>



Royal

Lepage Parkside Realty

PO Box 930; 9925 Main St,
Summerland, BC,

Phone: (250) 462-4888
info@joepeters.ca

The property information on this website is derived from the Canadian Real Estate Association's Data Distribution Facility (DDF®). DDF® references real estate listings held by various brokerage firms and franchisees. The accuracy of information is not guaranteed and should be independently verified. The trademarks REALTOR®, REALTORS® and the REALTOR® logo are controlled by The Canadian Real Estate Association (CREA) and identify real estate professionals who are members of CREA. The trademarks MLS®, Multiple Listing Service® and the associated logos are owned by CREA and identify the quality of services provided by real estate professionals who are members of CREA.