



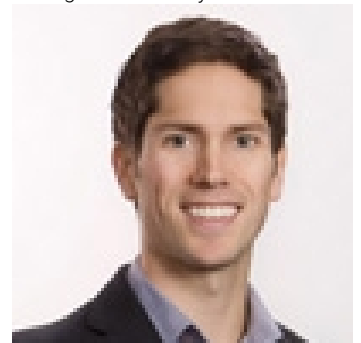
5340 Big White Road 101 Beaverdell British Columbia

\$900,000

Let your new restaurant concept come to life with this opportunity to purchase a strata lot in the desirable Inn at Big White. This is an Asset Sale of the Strata lot and equipment of the popular Cantina del Centro in Big White. This newly updated and popular 3008 SF restaurant location is primed for a new restaurant concept. Extensive renovations of the strata lot took place in 2021 & 2022. The strata lot has a Bar Side, Kitchen Side, Private Office and Staff Room. New kitchen and bar equipment has been installed and the draft lines have been replaced. The current liquor license is Food Primary and owner has completed an architect design study for a heated enclosed patio. Seating capacities are 60 ppl on the bar side, 30 ppl on the kitchen side and has exclusive use of the patio seating for 78 ppl. Strata fee \$3722.00 per month, Strata fee includes Hydro, Water, Gas and Garbage. Don't miss this opportunity! All information deemed reliable but can not be guaranteed.

(id:6769)

Listing Presented By:



Originally Listed by:
Business Finders Canada



Royal

Lepage Parkside Realty

PO Box 930; 9925 Main St,
Summerland, BC,

Phone: (250) 462-4888
info@joepeters.ca

The property information on this website is derived from the Canadian Real Estate Association's Data Distribution Facility (DDF®). DDF® references real estate listings held by various brokerage firms and franchisees. The accuracy of information is not guaranteed and should be independently verified. The trademarks REALTOR®, REALTORS® and the REALTOR® logo are controlled by The Canadian Real Estate Association (CREA) and identify real estate professionals who are members of CREA. The trademarks MLS®, Multiple Listing Service® and the associated logos are owned by CREA and identify the quality of services provided by real estate professionals who are members of CREA.