



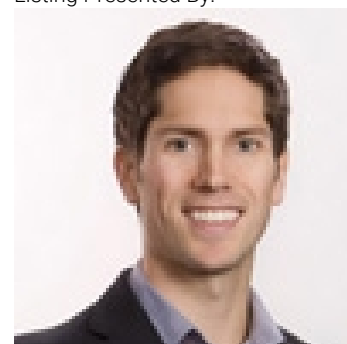
# 4450 Ponderosa Drive 102 Peachland British Columbia

\$699,000

Nestled in a serene location with breathtaking views of the lake, valley, and mountains, this 3-bedroom rancher plus den is a true gem. With 2300+ square feet on two levels, the property offers a perfect blend of comfort, style, and functionality. Upon entering, you are welcomed into a bright and airy living space. The open-concept design connects the living room, dining area, and kitchen, enhancing the home's spacious feel. Large windows flood the interior with natural light and frame the incredible scenery outside. The recently upgraded kitchen is a chef's dream, featuring modern counters, a stylish sink, and high-end appliances, including a new stove and fridge. The master is located on the main floor and features a spacious layout and an en-suite bathroom that has been tastefully renovated with contemporary fixtures and finishes. A second guest bedroom is on the main floor and has access to a modern renovated bathroom. A new washer and dryer are on the main floor. The walk-out basement features radiant heat in the floors, making it cozy and inviting year-round. This versatile space can serve as a recreational area, home theatre, or additional living space. The downstairs bedroom and den offer room for king-size beds. Plenty of storage accommodates the downstairs. Offering incredible views, ample privacy, and modern upgrades, this property is perfect for those seeking a peaceful retreat with all the conveniences of contemporary living. (id:6769)

- Storage 11'3" x 10'3"
- Office 8'9" x 7'4"
- Media 26'2" x 15'3"
- Bedroom 19'2" x 13'2"
- Full bathroom 9'3" x 9'3"
- Den 13'11" x 13'2"
- Bedroom 9'8" x 11'4"
- Other 8'5" x 12'2"
- Full ensuite bathroom 10'10" x 5'8"
- Primary Bedroom 13'7" x 15'4"
- Full bathroom 7'11" x 5'
- Kitchen 11'3" x 13'7"
- Living room 14'10" x 15'8"
- Dining room 14'10" x 10'8"
- Foyer 9'2" x 4'9"

Listing Presented By:



Originally Listed by:  
Royal LePage Kelowna

<https://www.scottsmithkelowna.ca/>



Royal

**Lepage Parkside Realty**

PO Box 930; 9925 Main St,  
Summerland, BC,

Phone: (250) 462-4888  
info@joepeters.ca

The property information on this website is derived from the Canadian Real Estate Association's Data Distribution Facility (DDF®). DDF® references real estate listings held by various brokerage firms and franchisees. The accuracy of information is not guaranteed and should be independently verified. The trademarks REALTOR®, REALTORS® and the REALTOR® logo are controlled by The Canadian Real Estate Association (CREA) and identify real estate professionals who are members of CREA. The trademarks MLS®, Multiple Listing Service® and the associated logos are owned by CREA and identify the quality of services provided by real estate professionals who are members of CREA.