

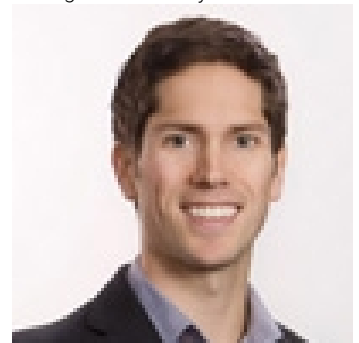


1028 Bull Crescent Kelowna British Columbia

\$1,879,000

Welcome to this exquisite 3,983sqft residence, built by Align West Homes and thoughtfully designed by Raquel Millikin of Isabey Interiors. This stunning home is spread over three spacious levels, with meticulous attention to detail throughout. The main level boasts a gourmet kitchen featuring an oversized island and prep kitchen, perfect for culinary enthusiasts. This inviting space flows seamlessly into the living room, where vaulted ceilings and a soaring fireplace create an atmosphere of elegance and comfort. Step outside to a covered patio and pool ready yard that backs onto a private green space, offering relaxation and privacy. Vaulted ceilings continue through the upper level where you will find a luxurious primary suite, complete with a spa-like ensuite featuring a soaker tub and a walk-in shower. A generous walk-in closet, equipped with organizers, ensures all your wardrobe needs are met. This floor also has two additional bedrooms, a bathroom, and a full laundry room. The lower level offers a spacious family room, additional bedroom, and bathroom. For added versatility, a completely separate one-bedroom legal suite with its own entrance and laundry is ideal for a mortgage helper or guests. Don't miss your chance to own this thoughtfully crafted home, where Align West Homes' exceptional craftsmanship meets Raquel Millikin's stylish interior design. Experience the perfect blend of modern luxury and functional design in this one-of-a-kind residence. (id:6769)

Listing Presented By:



Originally Listed by:
Sotheby's International Realty
Canada

<https://justinoconnor.com/>



Royal

Lepage Parkside Realty

PO Box 930; 9925 Main St,
Summerland, BC,

Phone: (250) 462-4888
info@joepeters.ca

- Full bathroom 6'1" x 12'8"
- Bedroom 14'4" x 11'4"
- Bedroom 14'4" x 11'4"
- Full ensuite bathroom 19'11" x 8'10"
- Laundry room 6'11" x 6'5"
- Primary Bedroom 13'3" x 13'10"
- Partial bathroom 5'6" x 9'
- Office 10'4" x 9'
- Living room 16'4" x 17'6"
- Dining room 11'6" x 16'
- Mud room 9' x 9'
- Pantry 17' x 6'8"

- Full bathroom 8'4" x 5'6"
- Bedroom 13'9" x 9'6"
- Family room 15'6" x 11'6"
- Foyer 12'8" x 7'
- Kitchen 15' x 13'6"
- Full bathroom 5'6" x 8'3"
- Primary Bedroom 11'6" x 11'6"

The property information on this website is derived from the Canadian Real Estate Association's Data Distribution Facility (DDF®). DDF® references real estate listings held by various brokerage firms and franchisees. The accuracy of information is not guaranteed and should be independently verified. The REALTOR®, REALTORS® and the REALTOR logo are trademarks controlled by The Canadian Real Estate Association (CREA) and identify real estate professionals who are members of CREA. The trademarks MLS®, Multiple Listing Service® and the associated logos are owned by CREA and identify the quality of services provided by real estate professionals who are members of CREA.