



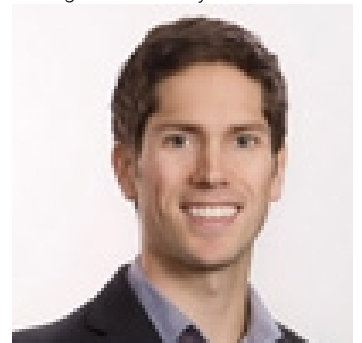
New Brunswick Real Estate Board

Dieppe New Brunswick

\$985,000

Welcome to 11 Maurice Crescent, located in the PRESTIGIOUS Fox Creek Golf Community on a large well-groomed PRIVATE TREED CORNER LOT THAT IS OVER A 1/2 ACRE. When you enter through the lovely foyer, you will be wowed by the great room with its large windows that allow in an abundance of natural light! The living room area features a propane floor-to-ceiling fireplace. The beautiful UPDATED kitchen is perfect for entertaining. There are patio doors that take you outside to the large deck that overlooks a peaceful & private backyard. On one end of the main floor, there is a spacious primary bedroom with a large walk-through closet to a 5 pce ensuite offering a tub, separate shower and double vanity. On the other side of the main floor, there are 2 additional large bedrooms and another 5pc bathroom with double vanity. The second level offers a 'BONUS ROOM/BEDROOM', located above the garage. Back to the main floor, by the door to the attached garage, there is a well designed mud room/laundry area. The fully finished lower level has a family room with a wet bar, a room used as an extra bedroom, and a 2pc bathroom, in addition to a large storage room. At the back of the property, there is a SEPARATE DRIVEWAY & PRIVATE ENTRANCE to a lovely 1 BEDROOM IN-LAW SUITE (full kitchen, living room, dining area, bedroom, and 4pc bathroom). In addition to the ATTACHED GARAGE, there is a DETACHED 2-CAR GARAGE, adding to the property's privacy & storage space! ** Call your REALTOR(R) today! (id:6769)

Listing Presented By:



Originally Listed by:
RE/MAX Quality Real Estate Inc.



Royal

Lepage Parkside Realty

PO Box 930; 9925 Main St,
Summerland, BC,

Phone: (250) 462-4888
info@joepeters.ca

- | | |
|---------------------------|--------------------------------|
| Bonus Room 14'10" x 23'7" | 5pc Bathroom 11'4" x 8'8" |
| 4pc Bathroom 14'3" x 7'8" | Bedroom 18'6" x 17'1" |
| Bedroom 15'0" x 14'1" | Bedroom 15'5" x 13'11" |
| Living room 20'5" x 21'3" | Other 12'4" x 10'2" |
| Dining room 9'4" x 7'11" | Primary Bedroom 15'10" x 18'3" |

Kitchen 9'11" x 13'4" Foyer 9'0" x 8'4"

The property information on this website is derived from the Canadian Real Estate Association's Data Distribution Facility (DDF®). DDF® references real estate listings held by various brokerage firms and franchisees. The accuracy of information is not guaranteed and should be independently verified. The REALTOR®, REALTORS® and the REALTOR logo are controlled by The Canadian Real Estate Association (CREA) and identify real estate professionals who are members of CREA. The trademarks MLS®, Multiple Listing Service® and the associated logos are owned by CREA and identify the quality of services provided by real estate professionals who are members of CREA.