

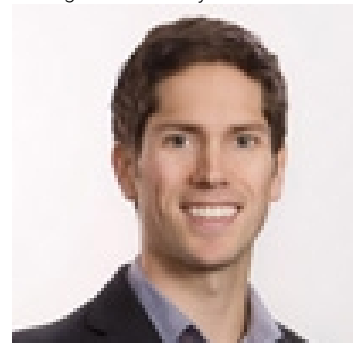


## 670 Highway 7 12 Richmond Hill Beaver Creek Business Park Ontario

\$218,000

Restaurant Property for Sale: A 423-square-foot food court unit located in the Shoppes of the Parkway, adjacent to the Sheraton Hotel in the heart of Richmond Hill town center. This property benefits from extensive underground parking shared with the hotel, with additional outdoor parking available. Conveniently accessible from City Hall and directly connected to the food court, this space offers high visibility and foot traffic. The current tenant, a Korean fried chicken restaurant, has a lease that ends in 2025, and they will not be renewing. This is a prime opportunity to start your own restaurant or lease the space for a strong return on investment. The unit is equipped with a commercial hood fan and a sprinkler system. \*\*\*\* EXTRAS \*\*\*\* Listing agent is related to the seller. Form 161 is available (id:6769)

Listing Presented By:



Originally Listed by:  
RE/MAX METROPOLIS REALTY

<https://ontariohomejessicasheninv estmentbuysell.com/>



Royal

**Lepage Parkside Realty**

PO Box 930; 9925 Main St,  
Summerland, BC,

Phone: (250) 462-4888  
[info@joepeters.ca](mailto:info@joepeters.ca)

The property information on this website is derived from the Canadian Real Estate Association's Data Distribution Facility (DDF®). DDF® references real estate listings held by various brokerage firms and franchisees. The accuracy of information is not guaranteed and should be independently verified. The trademarks REALTOR®, REALTORS® and the REALTOR® logo are controlled by The Canadian Real Estate Association (CREA) and identify real estate professionals who are members of CREA. The trademarks MLS®, Multiple Listing Service® and the associated logos are owned by CREA and identify the quality of services provided by real estate professionals who are members of CREA.