

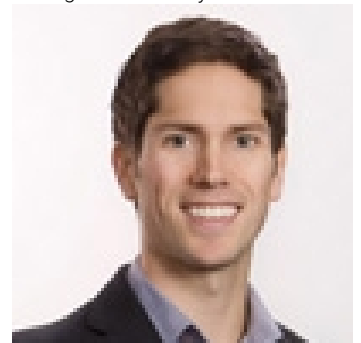


1231 Kyndree Court Kelowna British Columbia

\$2,900,000

Own a piece of paradise. This 1.84 acre lot in McKinley Landing is an exceptional opportunity that boasts a stunning view of Okanagan Lake, and is already zoned RR2, allowing residential homes with suites to be built. Unique opportunity to acquire 1.84 acres of lake view property NOT in the ALR in this prestigious area of the Okanagan. With RR2 zoning already in place there is immediate subdivision potential to subdivide into 3 or 5 separate lots on this quiet street. Building site and topography reports available. Build an Okanagan dream home filled with spectacular views of Okanagan Lake, mountains, and stunning sunsets. (id:6769)

Listing Presented By:



Originally Listed by:
Royal LePage Kelowna

<http://www.okanaganbc.com/>



Royal

Lepage Parkside Realty

PO Box 930; 9925 Main St,
Summerland, BC,

Phone: (250) 462-4888
info@joepeters.ca