

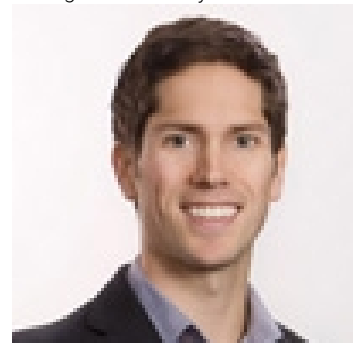


## 125 SASQUATCH Trail Osoyoos British Columbia

\$285,000

Gorgeous and private treed piece of land is awaiting your ideas for a rural home just 15 minutes East of Osoyoos. Located in the prestigious Osoyoos Mountain Estates subdivision of Sasquatch.. this extremely private 4.25 acre parcel has a very good producing well and is sheltered from road noise, winds or neighboring houses. Priced to sell. (id:6769)

Listing Presented By:



Originally Listed by:  
RE/MAX Realty Solutions

<http://www.osoyoosforsale.com/>



**Royal**

**Lepage Parkside Realty**

PO Box 930; 9925 Main St,  
Summerland, BC,

Phone: (250) 462-4888  
[info@joepeters.ca](mailto:info@joepeters.ca)

The property information on this website is derived from the Canadian Real Estate Association's Data Distribution Facility (DDF®). DDF® references real estate listings held by various brokerage firms and franchisees. The accuracy of information is not guaranteed and should be independently verified. The trademarks REALTOR®, REALTORS® and the REALTOR® logo are controlled by The Canadian Real Estate Association (CREA) and identify real estate professionals who are members of CREA. The trademarks MLS®, Multiple Listing Service® and the associated logos are owned by CREA and identify the quality of services provided by real estate professionals who are members of CREA.