



## 9020 Jim Bailey Road 126 Kelowna British Columbia

\$180,000

Motivated Sellers!! Has potential for a great family home. Located close to schools, shopping and restaurants. Located in the quiet area of the well managed park of Belaire Estates. There is access to the Rail Trail a short distance away. Lease term to 2114 so financing is available. Close proximity to wineries, golf courses, ski hills, UBCO, Kelowna International Airport, shopping, entertainment and medical offices. (id:6769)

Other 11'4" x 11'6"

Mud room 11'10" x 11'6"

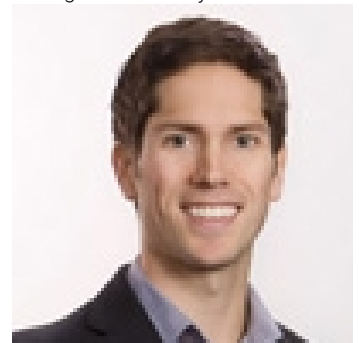
Full bathroom 10' x 8'

Primary Bedroom 11'9" x 13'8"

Living room 17' x 12'6"

Kitchen 16'2" x 12'

Listing Presented By:



Originally Listed by:  
Coldwell Banker Horizon Realty



**Royal**

**Lepage Parkside Realty**

PO Box 930; 9925 Main St,  
Summerland, BC,

Phone: (250) 462-4888  
info@joepeters.ca

The property information on this website is derived from the Canadian Real Estate Association's Data Distribution Facility (DDF®). DDF® references real estate listings held by various brokerage firms and franchisees. The accuracy of information is not guaranteed and should be independently verified. The trademarks REALTOR®, REALTORS® and the REALTOR® logo are controlled by The Canadian Real Estate Association (CREA) and identify real estate professionals who are members of CREA. The trademarks MLS®, Multiple Listing Service® and the associated logos are owned by CREA and identify the quality of services provided by real estate professionals who are members of CREA.