

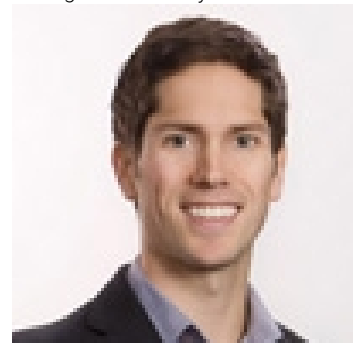


1413 NATION Crescent Prince George British Columbia

\$595,000

Turnkey investment property with 4 suites. Each suite has two bedrooms, a kitchen, and spacious living room. (Basement suites are unauthorized). There is a shared laundry on each side. The entire building is rented to one company who houses clients and it's staffed 24 hours per day. This property brings in \$52,800.00 per year and has an 8% cap rate. The tenants are self-sufficient and wish to stay. This is truly a gold mine. (id:6769)

Listing Presented By:



Originally Listed by:
Royal LePage Aspire Realty

<http://www.realtypg.com/>



Royal

Lepage Parkside Realty

PO Box 930; 9925 Main St,
Summerland, BC,

Phone: (250) 462-4888
info@joepeters.ca

The property information on this website is derived from the Canadian Real Estate Association's Data Distribution Facility (DDF®). DDF® references real estate listings held by various brokerage firms and franchisees. The accuracy of information is not guaranteed and should be independently verified. The trademarks REALTOR®, REALTORS® and the REALTOR® logo are controlled by The Canadian Real Estate Association (CREA) and identify real estate professionals who are members of CREA. The trademarks MLS®, Multiple Listing Service® and the associated logos are owned by CREA and identify the quality of services provided by real estate professionals who are members of CREA.