



# 1430 Hillside Avenue Penticton British Columbia

\$1,799,000

Welcome to this architecturally designed home with stunning panoramic lake, city and mountain views. Designed and constructed by the award winning local firm Landform Design Build, it is located at the base of Campbell Mountain with direct access to hiking, and biking trails. This home is also just minutes away from the town centre, local beaches, wineries, the KVR trail and Naramata village. The contemporary design features a foyer leading up to an open concept living area. Floor to ceiling custom, high efficiency glass sliding doors provide amazing views and seamless transition between the interior and unique inner courtyard. Exterior roller blinds provide shade on sunny summer days. Interior finishings include concrete and tile floors, birch and maple wall paneling plus heritage fir accents. The open concept kitchen features stainless steel appliances, maple cabinets, large island with raised seating and granite counter tops. Efficient in floor radiant heating is used throughout with ductless cooling assisted by solar panel system. The spacious master suite and ensuite are situated on the upper level allowing complete privacy and spectacular views. The large attached heated double garage is ample for parking, storage of bikes, kayaks and more. The original design allows for construction of separate studio with easy access at the front of the lot. The beautiful home provides a unique approach to Okanagan Living. (id:6769)

4pc Bathroom Measurements not available

Office 12'1" x 6'7"

Bedroom 12'2" x 8'11"

3pc Bathroom Measurements not available

Other 7'1" x 9'10"

Primary Bedroom 29'3" x 14'1"

2pc Bathroom Measurements not available

Utility room 13'8" x 5'6"

Storage 9'5" x 9'1"

Mud room 9'5" x 9'1"

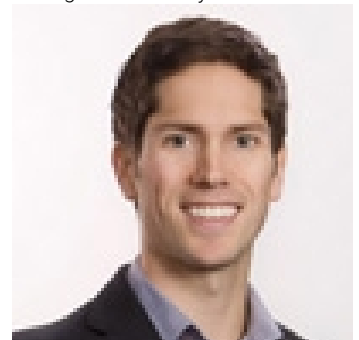
Foyer 11'9" x 10'1"

Den 9'11" x 9'6"

Kitchen 14'5" x 23'7"

Living room 22'2" x 16'8"

Listing Presented By:



Originally Listed by:  
Royal LePage Locations West



Royal

**Lepage Parkside Realty**

PO Box 930; 9925 Main St,  
Summerland, BC,

Phone: (250) 462-4888  
info@joepeters.ca

The property information on this website is derived from the Canadian Real Estate Association's Data Distribution Facility (DDF®). DDF® references real estate listings held by various brokerage firms and franchisees. The accuracy of information is not guaranteed and should be independently verified. The trademarks REALTOR®, REALTOR® and the REALTOR® logo are controlled by The Canadian Real Estate Association (CREA) and identify real estate professionals who are members of CREA. The trademarks MLS®, Multiple Listing Service® and the associated logos are owned by CREA and identify the quality of services provided by real estate professionals who are members of CREA.