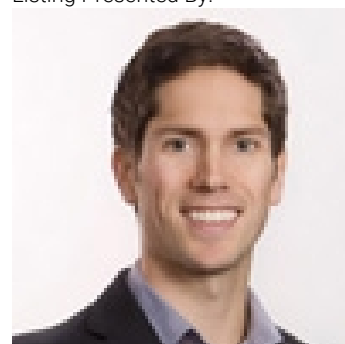


1435 Smethurst Road Naramata British Columbia

\$995,000

5 acres of natural land with superb lakeview and valley view. This is an exceptional opportunity to create a family estate property that is adjacent to the Kettle Valley Trail and close to a handful of the finest wineries on the Naramata Bench. This property is in the ALR but has never been farmed, the vegetation is mature natural trees and bushes. The property is serviced with water from the Naramata Irrigation District and there is power at the property line. There is a good amount of bedrock but the land is mostly flat with several options for building sites. If your dream is some space on the bench where you can build your personal residence then this will check a lot of boxes. (id:6769)

Listing Presented By:



Originally Listed by:
Royal LePage Locations West



Royal

Lepage Parkside Realty

PO Box 930; 9925 Main St,
Summerland, BC,

Phone: (250) 462-4888
info@joepeters.ca

The property information on this website is derived from the Canadian Real Estate Association's Data Distribution Facility (DDF®). DDF® references real estate listings held by various brokerage firms and franchisees. The accuracy of information is not guaranteed and should be independently verified. The trademarks REALTOR®, REALTORS® and the REALTOR® logo are controlled by The Canadian Real Estate Association (CREA) and identify real estate professionals who are members of CREA. The trademarks MLS®, Multiple Listing Service® and the associated logos are owned by CREA and identify the quality of services provided by real estate professionals who are members of CREA.