



1518 Marble Ledge Drive Lake Country British Columbia

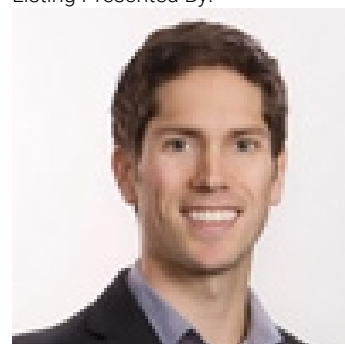
\$2,450,000

Stunning 4200+ sq.ft. 3 bedroom, 4 bathroom modern home in the Waterside community of Lakestone! Upon entering this home, you are immediately greeted with an open layout that emphasizes the unobstructed lakeviews ahead. The kitchen features high end appliances, such as the built-in coffee machine and gas range, with additional upgrades of a marble backsplash, and a large island with two-tone cabinetry. In the living room, there is a tiled feature wall with a fireplace that also opens up to overhead ceilings. This room is complimented with a nanawall for seamless indoor/outdoor transitions. Off of the main living space is a spacious enormous deck space, which features speakers, built-in electronic screens, and some of the best views in the community. The master bedroom features a spa-like ensuite with steam shower and soaker tub. Downstairs, there is a spacious family room with a wet-bar that leads to a covered deck with a yard space and tasteful landscaping, creating a private outdoor space. There is even a gym/office area (can be used as a bedroom if needed) that also opens up to the outdoors. There are two additional bedrooms, each serviced by their own bathroom. The basement offers in-floor heating for comfort in the colder winter months. Upstairs, there is a large rooftop deck space with open view. An elevator services all three floors. Access to a world-class 3.5M amenity centre with pool, hottubs, fitness centre, and more. (id:6769)

- Loft 14' x 9'9"
- 4pc Ensuite bath 9'9" x 9'7"
- Bedroom 14' x 14'
- 3pc Bathroom 9'8" x 12'4"
- Other 9'6" x 4'9"
- Bedroom 11'2" x 14'1"
- Storage 15'1" x 13'11"
- Den 11'8" x 11'8"
- Other 14' x 5'11"
- 5pc Ensuite bath 16' x 16'11"
- Primary Bedroom 14' x 16'5"
- Partial bathroom 5'11" x 5'10"
- Laundry room 7'8" x 20'

The property information on this website is derived from the Canadian Real Estate Association's Data Distribution Facility (DDF®). DDF® references real estate listings held by various brokerage firms and franchisees. The accuracy of information is not guaranteed and should be independently verified. The trademarks REALTOR®, REALTORS® and the REALTOR® logo are controlled by The Canadian Real Estate Association (CREA) and identify real estate professionals who are members of CREA. The trademarks Multiple Listing Service® and the associated logos are owned by CREA and identify the quality of services provided by real estate professionals who are members of CREA.

Listing Presented By:



Originally Listed by:
Sotheby's International Realty
Canada

<http://www.scottmarshallhomes.com/>



Royal

Lepage Parkside Realty

PO Box 930; 9925 Main St,
Summerland, BC,

Phone: (250) 462-4888
info@joepeters.ca

Other 7' x 9'

Dining room 14'8" x 12'3"

Recreation room 18'3" x 37'11"