

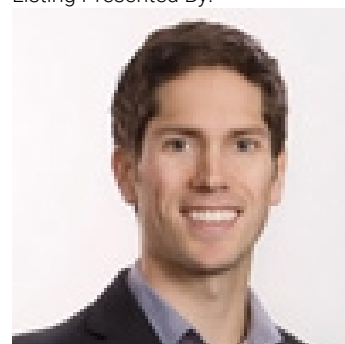


2550 Acland Road 16 & 17 Kelowna British Columbia

\$18

Unique opportunity to lease 2 updated industrial corner strata units with highway exposure totaling 3113 SQFT. Conveniently located by Highway 97 and Kelowna Airport in the Kelowna Springs Centre. 2 Grade level loading bays with 12 X 12 doors. Fully fenced and gated property with 6 dedicated parking stalls. 4 office spaces, caretaker's suite with kitchen and 3 bathrooms. Immediate possession available! Option to lease separately as well as purchase. Please see MLS: 10324810 (id:6769)

Listing Presented By:



Originally Listed by:
Coldwell Banker Horizon Realty

<http://www.accelokanaganrealestate.com/>



Royal

Lepage Parkside Realty

PO Box 930; 9925 Main St,
Summerland, BC,

Phone: (250) 462-4888
info@joepeters.ca

The property information on this website is derived from the Canadian Real Estate Association's Data Distribution Facility (DDF®). DDF® references real estate listings held by various brokerage firms and franchisees. The accuracy of information is not guaranteed and should be independently verified. The trademarks REALTOR®, REALTORS® and the REALTOR® logo are controlled by The Canadian Real Estate Association (CREA) and identify real estate professionals who are members of CREA. The trademarks MLS®, Multiple Listing Service® and the associated logos are owned by CREA and identify the quality of services provided by real estate professionals who are members of CREA.