



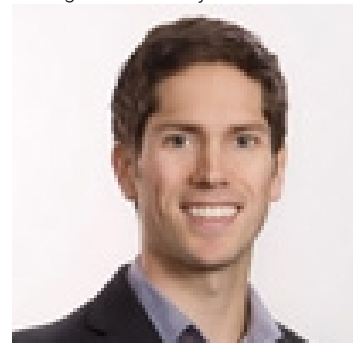
# 4035 Gellatly Road 160 West Kelowna British Columbia

\$1,195,800

Welcome to Canyon Ridge, an exclusive 55+ gated lifestyle community next to Glen Canyon Regional Park. This impeccably maintained, original owner-occupied detached rancher/walkout home has undergone extensive renovations and offers breathtaking lake views. Designed with functionality and comfort, the open-concept great room features vaulted ceilings, spacious kitchen with large quartz eat-up bar, and stainless steel appliances, seamlessly transitioning to a partially covered deck. The luxurious primary suite on the main floor includes a walk-in closet and an elegant 4-piece ensuite. The main floor also has an inviting living room with gas fireplace, cozy den, guest bedroom and bathroom, and laundry room with a folding counter and custom cabinetry. The generous walkout basement provides an additional guest bedroom, home gym/flex space, cozy family room, guest bathroom, large storage room, and another covered patio, perfect for hosting out-of-town guests/grandkids. The clubhouse offers a lounge, kitchen, banquet room, and library, ideal for socializing with Canyon Ridge residents. Outdoor enthusiasts will love the proximity to Gellatly Nut Farm, Glen Canyon Regional Park, and multiple beach access points, perfect for enjoying all four seasons in the beautiful Okanagan. Additionally, a short drive to Westbank amenities, West Kelowna Yacht Club, West Side Wine Trail, golf courses, and more. Book your private showing today to experience this idyllic retirement community firsthand! (id:6769)

- Storage 19'6" x 15'7"
- Recreation room 23'5" x 30'4"
- Other 9'10" x 10'3"
- Gym 15'11" x 11'10"
- Bedroom 12'7" x 16'8"
- 3pc Bathroom 8'8" x 8'5"
- Other 15'0" x 11'0"
- Kitchen 12'3" x 9'9"
- Other 21'6" x 21'4"
- Foyer 8'3" x 10'4"
- Family room 14'11" x 19'11"
- Dining room 9'1" x 10'10"
- Bedroom 11' x 12'7"
- Other 13'0" x 10'0"

Listing Presented By:



Originally Listed by:  
Stilhavn Real Estate Services

<http://www.kelseyfairbank.com/>



Royal

**Lepage Parkside Realty**

PO Box 930; 9925 Main St,  
Summerland, BC,

Phone: (250) 462-4888  
info@joepeters.ca

The property information on this website is derived from the Canadian Real Estate Association's Data Distribution Facility (DDF®). DDF® references real estate listings held by various brokerage firms and franchisees. The accuracy of information is not guaranteed and should be independently verified. The trademarks REALTOR®, REALTORS® and the REALTOR® logo are controlled by The Canadian Real Estate Association (CREA) and identify real estate professionals who are members of CREA. The trademarks MLS®, Multiple Listing Service® and the associated logos are owned by CREA and identify the quality of services provided by real estate professionals who are members of CREA.

Primary Bedroom 13'10" x 13'6"

4pc Ensuite bath 7'11" x 11'6"

Living room 12'3" x 13'

4pc Bathroom 7'5" x 7'9"

Laundry room 8'11" x 5'11"