



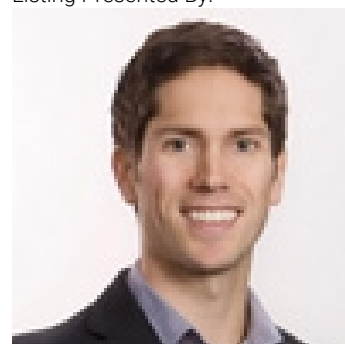
# 1614 Scott Crescent West Kelowna British Columbia

\$848,000

Live next to nature! This immaculate West-Coast Contemporary residence offers a perfect blend of seclusion & scenic beauty, featuring impressive Valley & Lake views! Set on a very private .454-acre lot, this multi-level home showcases a very bright, open floor plan designed for modern living. The living room, with its vaulted ceilings finished in clear cedar, includes a wood-burning fireplace & access to a large private sundeck with views of the City lights at night. The spacious kitchen boasts a big island & a cozy breakfast nook that opens onto a private patio overlooking the beautiful yard. The primary bedroom has a 4-piece ensuite with a large shower, a generous closet + access to its own private deck. Recent updates enhance the home's appeal, including a new roof + new skylights. The property also features a built-in vacuum system, natural gas forced air heating & an oversized garage/workshop with room for all the toys. The size of the garage is approximately 823 Sqft. The home backs onto Rock Ridge Nature Park, providing a natural backdrop & buffer from neighbours. The backyard features a private brick patio area with a garden & mature landscaping that compliments the surrounding nature. Additional features include a large storage room which is approximately 536 Sqft. This home is located close to beaches, shopping centres, & is approximately 10 minutes from Downtown Kelowna. Move in this fall! A fast possession is possible! (id:6769)

- |                                   |                            |
|-----------------------------------|----------------------------|
| Full bathroom 10'6" x 5'          | Family room 11'6" x 10'7"  |
| Full ensuite bathroom 8'1" x 9'2" | Partial bathroom 6'6" x 5' |
| Bedroom 10'6" x 9'3"              | Living room 14'6" x 19'1"  |
| Bedroom 13'10" x 10'6"            | Dining room 8'8" x 10'2"   |
| Primary Bedroom 12'3" x 15'4"     | Dining nook 7'8" x 11'11"  |
| Utility room 9' x 4'              | Kitchen 12'10" x 11'11"    |
| Foyer 7'7" x 8'7"                 |                            |

Listing Presented By:



Originally Listed by:  
Macdonald Realty Interior

<http://www.davidjurome.com/>



**Royal**

**Lepage Parkside Realty**

PO Box 930; 9925 Main St,  
Summerland, BC,

Phone: (250) 462-4888  
info@joepeters.ca

The property information on this website is derived from the Canadian Real Estate Association's Data Distribution Facility (DDF®). DDF® references real estate listings held by various brokerage firms and franchisees. The accuracy of information is not guaranteed and should be independently verified. The trademarks REALTOR®, REALTORS® and the REALTOR® logo are controlled by The Canadian Real Estate Association (CREA) and identify real estate professionals who are members of CREA. The trademarks MLS®, Multiple Listing Service® and the associated logos are owned by CREA and identify the quality of services provided by real estate professionals who are members of CREA.