



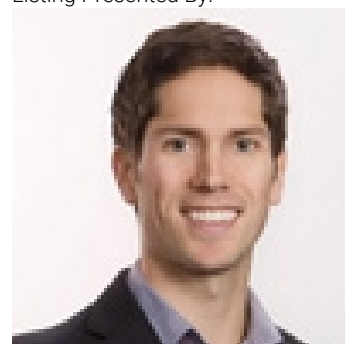
1686 Pritchard Drive West Kelowna British Columbia

\$1,650,000

Waterfront living with 2 boat slips on one of West Kelowna's most prestigious roads. This home is situated among only 48 properties that sit on the canal which are within walking distance to the incredible Pritchard Park and Frind winery; the only waterfront winery in all of North America. As soon as you step inside this home you are greeted by 2600 square feet of sprawling one level living that provides 4 bedrooms (could be 5), 3 bathrooms, 2 living rooms and an open concept kitchen/dining experience that capitalizes on lake views and functionality. The interior of the home has been completely repainted giving a fresh and clean welcome. The home enjoys good sized bedrooms while the primary enjoys an ensuite, walk in closet and private sliding glass doors that lead to your covered hot tub over looking the tranquil canal. The fourth bedroom is very sizeable and provides a great option for an older child or guests as it sits opposite the other rooms and has it's own exterior entrance along the side of the home. Outside, the home has a large covered seating area that faces West capturing Mission Hill Winery in the distance and providing privacy from neighboring properties. The home allows two motorized vehicles and has a covered area at the waterfront for your paddle boards, kayaks and other water toys. Experience Okanagan waterfront living at a fraction of the typical cost and without the heavy taxes, call your Realtor to schedule a showing today. (id:6769)

- Workshop 13'7" x 9'5"
- Other 7'5" x 12'11"
- Primary Bedroom 13'9" x 14'8"
- Living room 19'7" x 19'10"
- Laundry room 5'7" x 7'9"
- Kitchen 10'3" x 20'2"
- Family room 13'8" x 18'2"
- Dining room 13'8" x 18'2"
- Den 11'6" x 15'5"
- Bedroom 17'7" x 10'1"
- Bedroom 9'8" x 13'7"
- Bedroom 9'8" x 13'6"
- 5pc Bathroom 5'7" x 10'8"
- 3pc Ensuite bath 5'6" x 7'8"
- Partial bathroom 7'4" x 4'8"

Listing Presented By:



Originally Listed by:
Royal LePage Kelowna
<http://listwithleahy.com/>



Royal

Lepage Parkside Realty

PO Box 930; 9925 Main St,
Summerland, BC,

Phone: (250) 462-4888
info@joepeters.ca

The property information on this website is derived from the Canadian Real Estate Association's Data Distribution Facility (DDF®). DDF® references real estate listings held by various brokerage firms and franchisees. The accuracy of information is not guaranteed and should be independently verified. The trademarks REALTOR®, REALTORS® and the REALTOR® logo are controlled by The Canadian Real Estate Association (CREA) and identify real estate professionals who are members of CREA. The trademarks MLS®, Multiple Listing Service® and the associated logos are owned by CREA and identify the quality of services provided by real estate professionals who are members of CREA.