

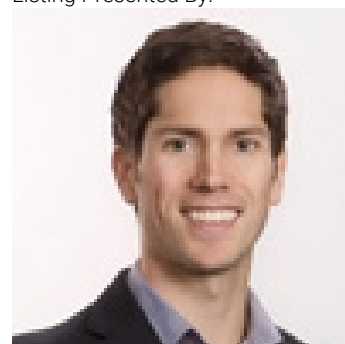


1732 TREFFRY Place Summerland British Columbia

\$359,000

Rarely do you come across an affordable flat .12-acre building lot. Situated in a new neighbourhood of Trout Creek, this property offers a convenient proximity to the elementary school, parks and beaches. Whether you're considering a rancher with an attached garage or a two-story residence to capture the lovely mountain views, this versatile lot accommodates various home styles. All essential services and utilities are readily available at the lot line, streamlining the building process. Choose your own builder and timeline! GST has already been paid and is not applicable. (id:6769)

Listing Presented By:



Originally Listed by:
Parker Real Estate



Royal

Lepage Parkside Realty

PO Box 930; 9925 Main St,
Summerland, BC,

Phone: (250) 462-4888
info@joepeters.ca

The property information on this website is derived from the Canadian Real Estate Association's Data Distribution Facility (DDF®). DDF® references real estate listings held by various brokerage firms and franchisees. The accuracy of information is not guaranteed and should be independently verified. The trademarks REALTOR®, REALTORS® and the REALTOR® logo are controlled by The Canadian Real Estate Association (CREA) and identify real estate professionals who are members of CREA. The trademarks MLS®, Multiple Listing Service® and the associated logos are owned by CREA and identify the quality of services provided by real estate professionals who are members of CREA.