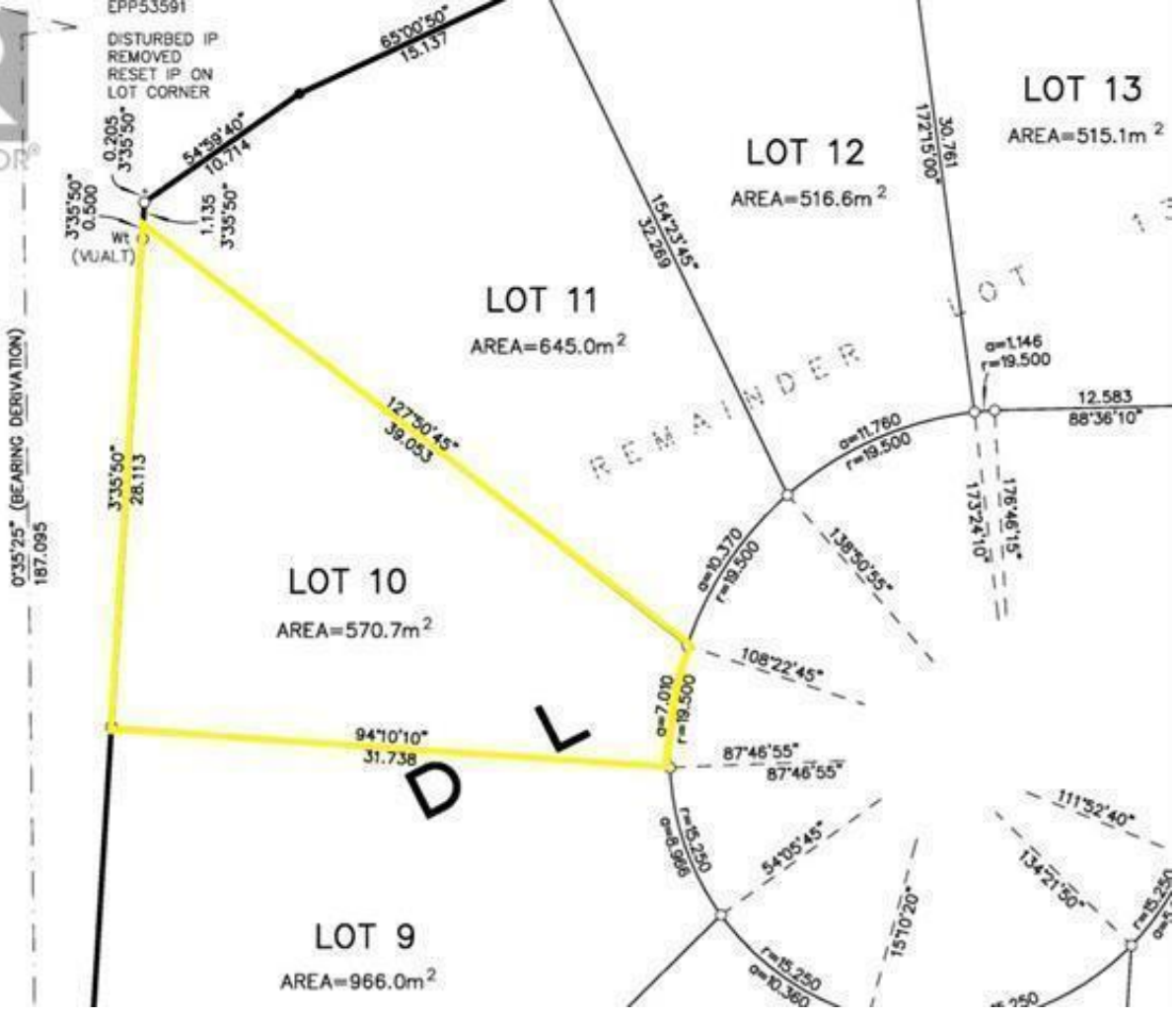




EPP53591

DISTURBED IP  
REMOVED  
RESET IP ON  
LOT CORNER



# 1736 Treffry Place Summerland British Columbia

\$299,900

Trout Creek Meadows Phase III is here! Single family residential lots on the lakeside of Trout Creek where the beaches, parks, elementary school and playground are steps away. Building scheme in place, all services available at the lot line, bring your own builder and timeline to build. Zoning allows for secondary suites and the property is flat which contributes to an easier build. See the listing brokerage for an information package! (id:6769)

Listing Presented By:



Originally Listed by:  
Sage Executive Group Real Estate



Royal

Lepage Parkside Realty

PO Box 930; 9925 Main St,  
Summerland, BC,

Phone: (250) 462-4888  
info@joepeters.ca

The property information on this website is derived from the Canadian Real Estate Association's Data Distribution Facility (DDF®). DDF® references real estate listings held by various brokerage firms and franchisees. The accuracy of information is not guaranteed and should be independently verified. The trademarks REALTOR®, REALTORS® and the REALTOR® logo are controlled by The Canadian Real Estate Association (CREA) and identify real estate professionals who are members of CREA. The trademarks MLS®, Multiple Listing Service® and the associated logos are owned by CREA and identify the quality of services provided by real estate professionals who are members of CREA.