

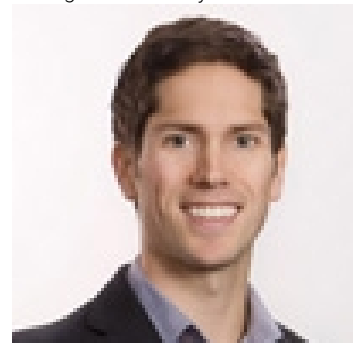


# 1840 Byland Road West Kelowna British Columbia

\$19

Rare opportunity to lease warehouse/office space along Highway 97 with great exposure and pylon signage. The site features two separate buildings totaling 6,700 square feet with approximately 25,000 square feet of yard space. Building One, 3,200 square feet, includes an open sales/reception area, four offices, two washrooms, and warehouse space with one overhead door, along with three additional offices on the second floor. Building Two, 3,500 square feet, features one office, one washroom, a mezzanine, and warehouse space with three overhead doors. The property is zoned Service Commercial (C4), allowing for a variety of commercial uses. Available immediately. Contact the listing agent for more information. (id:6769)

Listing Presented By:



Originally Listed by:  
Venture Realty Corp.



**Royal**

**Lepage Parkside Realty**

PO Box 930; 9925 Main St,  
Summerland, BC,

Phone: (250) 462-4888  
info@joepeters.ca

The property information on this website is derived from the Canadian Real Estate Association's Data Distribution Facility (DDF®). DDF® references real estate listings held by various brokerage firms and franchisees. The accuracy of information is not guaranteed and should be independently verified. The trademarks REALTOR®, REALTORS® and the REALTOR® logo are controlled by The Canadian Real Estate Association (CREA) and identify real estate professionals who are members of CREA. The trademarks MLS®, Multiple Listing Service® and the associated logos are owned by CREA and identify the quality of services provided by real estate professionals who are members of CREA.